



# Spyderco®



**2008**  
**PRODUCT**  
**GUIDE**



## SPYDERCO CONTENTS

<b>2</b>	CLIP-IT FOLDING KNIVES
<b>32</b>	SALT SERIES KNIVES
<b>40</b>	FIXED BLADE KNIVES
<b>47</b>	KITCHEN KNIVES
<b>49</b>	SHARPENERS
<b>56</b>	ACCESSORIES
<b>60</b>	WARRANTY INFORMATION
<b>78</b>	GLOSSARY
<b>84</b>	STEEL ELEMENTS
<b>87</b>	PATENTS AND TRADEMARKS
<b>86</b>	INDEX
<b>88</b>	STEEL CHART



## BYRD CONTENTS

<b>62</b>	FOLDING KNIVES & TOOLS
<b>77</b>	ACCESSORIES
<b>77</b>	WARRANTY INFORMATION
<b>86</b>	INDEX



## THERE'S A LOT RIDING ON THE CLIP...

CLIPIT is both a name and a verb. The name, personifies Spyderco's line of folding knives with clips. The verb refers to the physical action of being able to clip the knife to your clothing.

We're human and creatures of convenience. Minute by minute we create, adjust and are predisposed to gravitate to the tool that performs best and is easily applied to the task in front of us. Illustrating that instinctive quest for the best, explains the success of the CLIPIT knife.

Almost all Spyderco knives are CLIPITs. The idea surfaced in the 1980s when Sal Glesser (Spyderco's founder) imagined, then designed, a folding pocketknife with three revolutionary features: A clothing clip, a way to open the knife with one-hand (The Spyderco Round Hole) and serrations on a folding knife blade.

These concepts lifted pocketknife function to a higher level. Clips shifted the knife's weight from the bottom of a pocket to the top, attaching the knife inside so it sat/rode flat regardless of size and wasn't as likely to be dropped or lost.

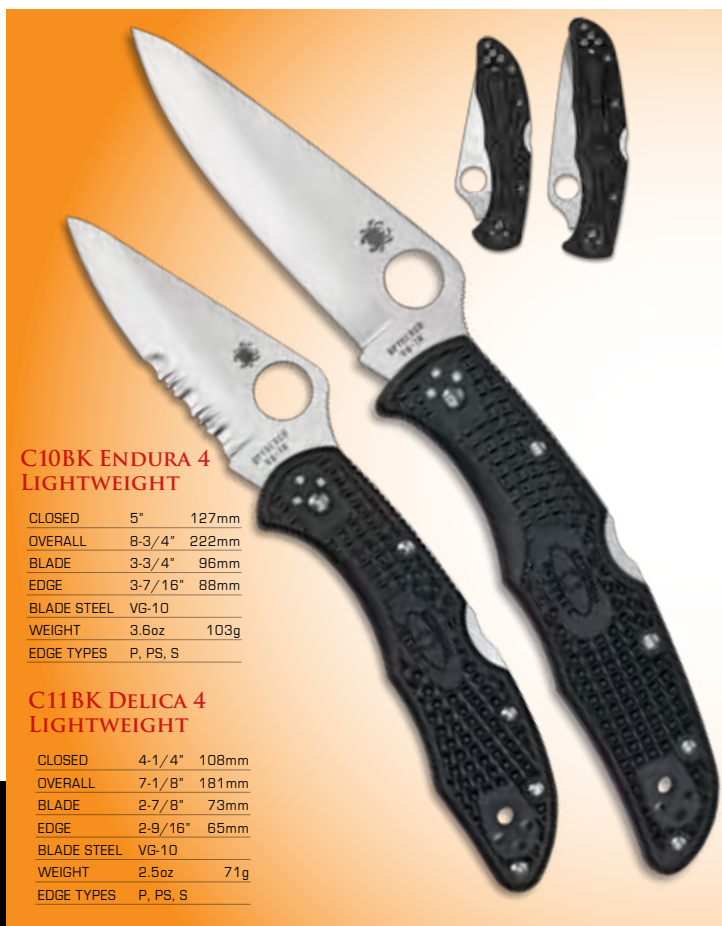
The Spyderco Round Hole enabled the folder's blade to open with one hand, leaving your other hand free.

Serrations gave folding knife blades the cutting power of a kitchen knife by increasing the sharp edge's surface area.

Today, try finding folders without these features. From our first CLIPIT, knife clips (and the knife handles they grace) continue evolving with new technologies, materials and manufacturing techniques. CLIPITs represent the originality and innovation that is Spyderco.

**Spyderco originality. Think for yourself.  
Design for your customer. Copy no one.**





### C10BK ENDURA 4 LIGHTWEIGHT

CLOSED	5"	127mm
OVERALL	8-3/4"	222mm
BLADE	3-3/4"	96mm
EDGE	3-7/16"	88mm
BLADE STEEL	VG-10	
WEIGHT	3.6oz	103g
EDGE TYPES	P, PS, S	

### C11BK DELICA 4 LIGHTWEIGHT

CLOSED	4-1/4"	108mm
OVERALL	7-1/8"	181mm
BLADE	2-7/8"	73mm
EDGE	2-9/16"	65mm
BLADE STEEL	VG-10	
WEIGHT	2.5oz	71g
EDGE TYPES	P, PS, S	

### C10GYW ENDURA 4 WAVE

CLOSED	5"	127mm
OVERALL	8-13/16"	224mm
BLADE	3-13/16"	97mm
EDGE	3-7/16"	88mm
BLADE STEEL	VG-10	
WEIGHT	3.6oz	103g
EDGE TYPES	P, PS, S	

### C11GYW DELICA 4 WAVE

CLOSED	4-1/4"	108mm
OVERALL	7-5/32"	182mm
BLADE	2-29/32"	74mm
EDGE	2-9/16"	65mm
BLADE STEEL	VG-10	
WEIGHT	2.55oz	72g
EDGE TYPES	P, PS, S	

No two knives embody all that is Spyderco more than the Endura and Delica: High performance, worry-free reliability, failsafe materials and designs. They're our best sellers and the test subjects of Spyderco's never-ending science experiment for ongoing improvements and advancement in knifemaking. Both are lightweight titleholders in the knife industry for quality, usability and value going on two decades already.

#### C10BK ENDURA

- 🌀 4-way Clip: Tip up/down left/right hand
- 🌀 Screw together construction
- 🌀 Skeletonized nested steel internal liners
- 🌀 Phosphor bronze bushings
- 🌀 FRN Bi-Directional Textured™ Handle
- 🌀 David Boye Dent
- 🌀 Enlarged opening hole
- 🌀 Spine Jimping
- 🌀 Flat saber-ground blade

#### C11BK DELICA

- 🌀 4-way Clip: Tip up/down left/right hand
- 🌀 Screw together construction
- 🌀 Skeletonized nested steel internal liners
- 🌀 Phosphor bronze bushings
- 🌀 FRN Bi-Directional Textured™ Handle
- 🌀 David Boye Dent
- 🌀 Enlarged opening hole
- 🌀 Spine Jimping
- 🌀 Flat saber-ground blade

Hail Ernest Emerson - the innovative knifemaker credited with developing the Wave Opening Feature. The wave hook juts out the blade's spine catching a pant's pocket edge when drawing the knife, opening the blade ready for use. We offer the Wave Opening Feature on several Spyderco designs with appreciation, consent and royalties to Mr. Emerson: Patent Number: 5,878,500.

#### C10GYW ENDURA 4 WAVE

- 🌀 4-way Clip: Tip up/down left/right hand
- 🌀 Screw together construction
- 🌀 Skeletonized nested steel internal liners
- 🌀 Phosphor bronze bushings
- 🌀 FRN Bi-Directional Textured™ Handle
- 🌀 David Boye Dent
- 🌀 Enlarged opening hole
- 🌀 Spine Jimping
- 🌀 Flat saber-ground blade

#### C11GYW DELICA 4 WAVE

- 🌀 4-way Clip: Tip up/down left/right hand
- 🌀 Screw together construction
- 🌀 Skeletonized nested steel internal liners
- 🌀 Phosphor bronze bushings
- 🌀 FRN Bi-Directional Textured™ Handle
- 🌀 David Boye Dent
- 🌀 Enlarged opening hole
- 🌀 Spine Jimping
- 🌀 Flat saber-ground blade





## C10FG ENDURA 4 FOLIAGE GREEN

CLOSED	5"	127mm
OVERALL	8-3/4"	222mm
BLADE	3-3/4"	96mm
EDGE	3-7/16"	88mm
BLADE STEEL	VG-10	
WEIGHT	3.6oz	103g
EDGE TYPES	PS, S	

## C11FG DELICA 4 FOLIAGE GREEN

CLOSED	4-1/4"	108mm
OVERALL	7-1/8"	181mm
BLADE	2-7/8"	73mm
EDGE	2-9/16"	65mm
BLADE STEEL	VG-10	
WEIGHT	2.5oz	71g
EDGE TYPES	PS, S	

Shade-shifting green-gray color blends with the U.S. Army's digital cammo. The color takes on the spectrum of its surroundings keeping the knife's presence quietly unobtrusive.

## C10FG ENDURA LIGHTWEIGHT FOLIAGE GREEN

- ☛ 4-way Clip: Tip up/down left/right hand
- ☛ Screw together construction
- ☛ Skeletonized nested steel internal liners
- ☛ Phosphor bronze bushings
- ☛ FRN Bi-Directional Textured™ Handle
- ☛ David Boye Dent
- ☛ Enlarged opening hole
- ☛ Spine Jimping
- ☛ Flat saber-ground blade

## C11FG DELICA LIGHTWEIGHT FOLIAGE GREEN

- ☛ 4-way Clip: Tip up/down left/right hand
- ☛ Screw together construction
- ☛ Skeletonized nested steel internal liners
- ☛ Phosphor bronze bushings
- ☛ FRN Bi-Directional Textured™ Handle
- ☛ David Boye Dent
- ☛ Enlarged opening hole
- ☛ Spine Jimping
- ☛ Flat saber-ground blade



**NEW!**

## C10GFG ENDURA 4 FOLIAGE GREEN G-10

CLOSED	5"	127mm
OVERALL	8-3/4"	222mm
BLADE	3-3/4"	96mm
EDGE	3-7/16"	88mm
BLADE STEEL	VG-10	
WEIGHT	4.5oz	127g
EDGE TYPES	P	

## C11GFG DELICA 4 FOLIAGE GREEN G-10

CLOSED	4-1/4"	108mm
OVERALL	7-1/8"	181mm
BLADE	2-7/8"	73mm
EDGE	2-9/16"	65mm
BLADE STEEL	VG-10	
WEIGHT	3.25oz	92g
EDGE TYPES	P	

Production Prototype Pictured

Production Prototype Pictured

Endura and Delica models with color-blend foliage green G-10 laminate handles. Grip grabbing lightweight handles shake off temperature extremes, chemicals and hard use without discoloring, warping or peeling.

## C10GFG ENDURA FOLIAGE GREEN G-10

- ☛ 4-way Clip: Tip up/down left/right hand
- ☛ Screw together construction
- ☛ Skeletonized nested steel liners
- ☛ Phosphor bronze bushings
- ☛ David Boye Dent
- ☛ Enlarged opening hole
- ☛ Spine Jimping
- ☛ Flat saber-ground blade

## C11GFG DELICA FOLIAGE GREEN G-10

- ☛ 4-way Clip: Tip up/down left/right hand
- ☛ Screw together construction
- ☛ Skeletonized nested steel liners
- ☛ Phosphor bronze bushings
- ☛ David Boye Dent
- ☛ Enlarged opening hole
- ☛ Spine Jimping
- ☛ Flat saber-ground blade



### C10 ENDURA 4 STAINLESS

CLOSED	4-7/8"	124mm
OVERALL	8-3/4"	222mm
BLADE	3-7/8"	98mm
EDGE	3-7/16"	88mm
BLADE STEEL	VG-10	
WEIGHT	5.625oz	161g
EDGE TYPES	P, PS, S	

### C11 DELICA 4 STAINLESS

CLOSED	4-3/16"	106mm
OVERALL	7-1/16"	179mm
BLADE	2-7/8"	73mm
EDGE	2-9/16"	65mm
BLADE STEEL	VG-10	
WEIGHT	4oz	114g
EDGE TYPES	P, PS, S	

Stainless handled knives take hard use, eat it up, and then take more. They're a heavier-weight alternate to lightweight Delicas and Enduras. Some prefer the heft in their pocket reassuring them the folder is there, clipped and ready anytime. Stainless handle creates a flat surface for engraving and etching.

### C10 ENDURA STAINLESS

- 🗨️ 4-way Clip: Tip up/down left/right hand
- 🔩 Pinned construction
- 🔩 Phosphor bronze bushings
- 🗨️ David Boye Dent
- 🗨️ Enlarged opening hole
- 🗨️ Spine Jimping
- 🗨️ Flat saber-ground blade

### C11 DELICA STAINLESS

- 🗨️ 4-way Clip: Tip up/down left/right hand
- 🔩 Screw together construction
- 🔩 Phosphor bronze bushings
- 🗨️ David Boye Dent
- 🗨️ Enlarged opening hole
- 🗨️ Spine Jimping
- 🗨️ Flat saber-ground blade



### C10GRE ENDURA 4 ZDP-189

CLOSED	5"	127mm
OVERALL	8-3/4"	222mm
BLADE	3-3/4"	96mm
EDGE	3-7/16"	88mm
BLADE STEEL	ZDP-189	
WEIGHT	3.6oz	103g
EDGE TYPES	P, PS, S	

### C11GRE DELICA 4 ZDP-189

CLOSED	4-1/4"	108mm
OVERALL	7-1/8"	181mm
BLADE	2-7/8"	73mm
EDGE	2-9/16"	65mm
BLADE STEEL	ZDP-189	
WEIGHT	2.5oz	71g
EDGE TYPES	P, PS, S	

The current leader in the race of ultra-high carbon blade steels is ZDP-189. Other knife companies offer it on pricey high-end folders, the Endura and Delica, letting the hard-user or steel junkie experience and appreciate its edge holding performance without breaking the bank.

### C10GRE ENDURA ZDP-189

- 🗨️ 4-way Clip: Tip up/down left/right hand
- 🔩 Screw together construction
- 🔩 Skeletonized nested steel internal liners
- 🔩 Phosphor bronze bushings
- 🗨️ FRN Bi-Directional Textured™ Handle
- 🗨️ David Boye Dent
- 🗨️ Enlarged opening hole
- 🗨️ Spine Jimping
- 🗨️ Flat saber-ground blade

### C11GRE DELICA ZDP-189

- 🗨️ 4-way Clip: Tip up/down left/right hand
- 🔩 Screw together construction
- 🔩 Skeletonized nested steel internal liners
- 🔩 Phosphor bronze bushings
- 🗨️ FRN Bi-Directional Textured™ Handle
- 🗨️ David Boye Dent
- 🗨️ Enlarged opening hole
- 🗨️ Spine Jimping
- 🗨️ Flat saber-ground blade



### C10TR ENDURA 4 TRAINER

CLOSED	5"	127mm
OVERALL	8-9/16"	217mm
BLADE	3-9/16"	91mm
EDGE	N/A	
BLADE STEEL	N/A	
WEIGHT	3.6oz	103g
EDGE TYPES	N/A	

### C11TR DELICA 4 TRAINER

CLOSED	4-1/4"	108mm
OVERALL	7"	178mm
BLADE	2-7/8"	73mm
EDGE	N/A	
BLADE STEEL	N/A	
WEIGHT	2.5oz	71g
EDGE TYPES	N/A	

**NEW!**

### C10TRW ENDURA 4 WAVE TRAINER

CLOSED	5"	127mm
OVERALL	8-9/16"	217mm
BLADE	3-9/16"	91mm
EDGE	N/A	
BLADE STEEL	GIN-1	
WEIGHT	3.6oz	103g
EDGE TYPES	N/A	

### C11TRW DELICA 4 WAVE TRAINER

CLOSED	4-1/4"	108mm
OVERALL	7"	178mm
BLADE	2-3/4"	70mm
EDGE	N/A	
BLADE STEEL	GIN-1	
WEIGHT	2.5oz	71g
EDGE TYPES	N/A	

The learning phase of safely using and training with a folder should always be done with a non-sharpened edge. Our trainers are same-size and weight with corresponding ergos as a live knife, minus the cutting edge. Red handle denotes the folder a trainer.

#### C10TR ENDURA TRAINER

- ☛ 4-way Clip: Tip up/down left/right hand
- ☛ Screw together construction
- ☛ Skeletonized nested steel internal liners
- ☛ Phosphor bronze bushings
- ☛ FRN Bi-Directional Textured™ Handle
- ☛ David Boye Dent
- ☛ Enlarged opening hole
- ☛ Spine Jimping
- ☛ Non-sharpened blade

#### C11TR DELICA TRAINER

- ☛ 4-way Clip: Tip up/down left/right hand
- ☛ Screw together construction
- ☛ Skeletonized nested steel internal liners
- ☛ Phosphor bronze bushings
- ☛ FRN Bi-Directional Textured™ Handle
- ☛ David Boye Dent
- ☛ Enlarged opening hole
- ☛ Spine Jimping
- ☛ Non-sharpened blade

\* Selling Suggestion: Placing a trainer on your retail counter lets the uninitiated knife customer comfortably handle a folder, learning safe operation without the possible consequences of meeting a sharpened edge.

A cut-safe method of learning operation and use of the Wave Opening Feature. Red handle denotes the knife a non-sharpened trainer. Identical weight, size and balance as the live version.

#### C10TRW ENDURA WAVE TRAINER

- ☛ 4-way Clip: Tip up/down left/right hand
- ☛ Screw together construction
- ☛ Skeletonized nested steel internal liners
- ☛ Phosphor bronze bushings
- ☛ FRN Bi-Directional Textured™ Handle
- ☛ David Boye Dent
- ☛ Enlarged opening hole
- ☛ Spine Jimping
- ☛ Non-sharpened blade

#### C11TRW DELICA WAVE TRAINER

- ☛ 4-way Clip: Tip up/down left/right hand
- ☛ Screw together construction
- ☛ Skeletonized nested steel internal liners
- ☛ Phosphor bronze bushings
- ☛ FRN Bi-Directional Textured™ Handle
- ☛ David Boye Dent
- ☛ Enlarged opening hole
- ☛ Spine Jimping
- ☛ Non-sharpened blade

**C07 POLICE MODEL**

CLOSED	5-5/16" 135mm
OVERALL	9-7/16" 240mm
BLADE	4-1/8" 104mm
EDGE	3-13/16" 97mm
BLADE STEEL	VG-10
WEIGHT	5.6oz 159g
EDGE TYPES	P, PS, S

**C08 HARPY**

CLOSED	3-7/8" 99mm
OVERALL	6-1/2" 165mm
BLADE	2-3/4" 70mm
EDGE	2-9/16" 65mm
BLADE STEEL	VG-10
WEIGHT	3.75oz 106g
EDGE TYPES	S

**C12 CIVILIAN**

CLOSED	5-13/16" 132mm
OVERALL	9-3/16" 233mm
BLADE	4-1/8" 105mm
EDGE	3-3/4" 95mm
BLADE STEEL	VG-10
WEIGHT	4.74oz 134g
EDGE TYPES	S

**NEW!****C79 ASSIST**

CLOSED	4-7/8" 124mm
OVERALL	8-3/8" 213mm
BLADE	3-11/16" 94mm
EDGE	3-3/16" 81mm
BLADE STEEL	VG-10
WEIGHT	4oz 115g
EDGE TYPES	PS

**C07 POLICE MODEL**

It's been twenty years since the Police Model was introduced yet it remains an icon in our top-ten seller club. Why? Efficiency. The largest possible blade built into a thin, equal sized handle. Save and Serve professionals seek out the highest performing, ergonomically usable tool. Icon status explained.

- ☀ Right hand tip-down clip
- ☀ David Boye Dent
- ☀ Weight reducing spine swedge
- ☀ Stainless handle can be engraved or embellished
- ☀ Hollow-ground blade

**C08 HARPY**

Nothing is more appropriately engineered for downward, pulling cuts than a Hawkbill blade. The tip's curve holds what you're cutting against the sharp edge for failsafe, downward-motion cutting, done at arms length. Rope, line netting and poly-propylene, say goodbye.

- ☀ Right hand tip-down clip
- ☀ Handle drying vent/shackle key
- ☀ David Boye Dent
- ☀ Hollow-ground blade

**C12 CIVILIAN**

Manufactured originally for a U.S. Law enforcement agency. Its reverse "S" blade, sheer-fine tip and curving Spyder-Edge are highly specialized and available in restricted quantities.

\*Blade shape and tip are not recommended for everyday usage.

- ☀ Right -hand, tip-down carry
- ☀ G-10 handle
- ☀ Micro-thin tip
- ☀ Patented reverse "S" hollow-ground blade

\*Limited quantities

**C79 ASSIST**

The Testarossa of rescue knives featuring: Cobra Hood for by-feel blade opening. Patented lift-and-pry blunt tip. Attention-grabbing emergency whistle. Squeezing the closed blade into the handle exposes a carbide glass/ice breaking tip (retractable and replaceable). Wavy curves on handle and blade hold rope/line placed between the partially open blade and handle letting you scissor cut, trimming flyaway fibers without having to fully open the blade. Plain-edged tip for stripping and precise cutting.

- ☀ Ambidextrous tip-up clip
- ☀ David Boye Dent
- ☀ Bi-Directional® Textured 3-D FRN handle
- ☀ Cobra Hood
- ☀ Hollow-ground blade
- ☀ Available: safety orange or black



**C45 RESCUE 79MM**

CLOSED	4-1/8"	104mm
OVERALL	7-1/8"	183mm
BLADE	3-1/8"	79mm
EDGE	2-5/8"	67mm
BLADE STEEL	VG-10	
WEIGHT	2.25oz	64g
EDGE TYPES	S	

**C14 RESCUE 93MM**

CLOSED	4-5/8"	116mm
OVERALL	8-3/16"	209mm
BLADE	3-5/8"	93mm
EDGE	3-7/16"	86mm
BLADE STEEL	VG-10	
WEIGHT	2.6oz	75g
EDGE TYPES	S	

**NEW!**

**C14GYW RESCUE WAVE**

CLOSED	4-5/8"	116mm
OVERALL	8-3/16"	209mm
BLADE	3-5/8"	93mm
EDGE	3-7/16"	86mm
BLADE STEEL	VG-10	
WEIGHT	2.6oz	75g
EDGE TYPES	S	

**C14 RESCUE 93MM**

Everyone from emergency responders to ranchers and river guides carry rounded-tip blades. They lessen the probability of piercing/puncturing inflatable watercraft, livestock or people.

A cardinal piece of emergency-cutting rescue equipment, Sheepfoot blades slip under clothing, rope and bindings for safeguarded cutting without sharp tip worries.

- ✿ Ambidextrous tip-up clip
- ✿ David Boye Dent
- ✿ Flat, saber-ground Sheepfoot blade
- ✿ 14mm Spyderco Round Hole®
- ✿ FRN Volcano Grip™ handle
- ✿ Available: blue or black. Blue model comes with a PlainEdged tip for strip-ping and fine cutting. Black model is toothed to the edge.

**C45 RESCUE 79MM**

Two-thirds sized Rescue offers an option for smaller hands and pockets with equal cutting dynamics.

- ✿ Ambidextrous tip-up clip
- ✿ David Boye Dent
- ✿ Flat, saber-ground Sheepfoot blade
- ✿ 14mm Spyderco Round Hole®
- ✿ FRN Volcano Grip™ handle
- ✿ Available: safety orange or black

**C14GYW RESCUE WAVE**

Classic Rescue model with the Emerson Wave opening feature. Protruding out the top of the blade, the Wave catches a pocket's edge or belt when drawing the knife, propelling it open.

- ✿ Ambidextrous tip-up clip
- ✿ David Boye Dent
- ✿ Flat, saber-ground Sheepfoot blade
- ✿ 14mm Spyderco Round Hole®
- ✿ FRN Volcano Grip™ handle





## C28BK DRAGONFLY LIGHTWEIGHT

CLOSED	3-7/32"	82mm
OVERALL	5-7/16"	138mm
BLADE	2-5/16"	58mm
EDGE	1-7/8"	48mm
BLADE STEEL	VG-10	
WEIGHT	1.2oz	33g
EDGE TYPES	P, S	

## C28 DRAGONFLY STAINLESS

CLOSED	3-7/32"	82mm
OVERALL	5-7/16"	138mm
BLADE	2-5/16"	58mm
EDGE	1-7/8"	48mm
BLADE STEEL	VG-10	
WEIGHT	2.6oz	73g
EDGE TYPES	P, S	

## C28PET DRAGONFLY ETCHED

CLOSED	3-7/32"	82mm
OVERALL	5-7/16"	138mm
BLADE	2-5/16"	58mm
EDGE	1-7/8"	48mm
BLADE STEEL	VG-10	
WEIGHT	2.6oz	73g
EDGE TYPES	P	



## C29 CRICKET STAINLESS

CLOSED	2-3/4"	70mm
OVERALL	4-9/16"	116mm
BLADE	1-7/8"	48mm
EDGE	1-3/4"	44mm
BLADE STEEL	VG-10	
WEIGHT	1.75oz	49.5g
EDGE TYPES	P, S	

## C29PET CRICKET ETCHED

CLOSED	2-3/4"	70mm
OVERALL	4-9/16"	116mm
BLADE	1-7/8"	48mm
EDGE	1-3/4"	44mm
BLADE STEEL	VG-10	
WEIGHT	1.75oz	49.5g
EDGE TYPES	P	

## C30BK2 REMOTE RELEASE 2

CLOSED	4-13/16"	122mm
OVERALL	7-13/16"	198mm
BLADE	3"	76mm
EDGE	2-5/8"	67mm
BLADE STEEL	VG-10	
WEIGHT	2.5oz	71g
EDGE TYPES	S	

## C28BK DRAGONFLY LIGHTWEIGHT

A firecracker, packing more cutting heat in a small parcel than expected. Mid-sized blade and handle are offset by a deep front-finger choil, spine cusp and hand-hugging ergos that work in any size hand. Choil/cusp combination lets you choke up nearer to the cutting edge for managed slicing and separating.

- ☛ Right hand integral tip-up clip
- ☛ FRN Volcano Grip handle
- ☛ David Boye Dent
- ☛ 11mm Spyderco Round Hole
- ☛ Leaf-shaped flat ground blade

- ☛ Right hand tip-up clip
- ☛ Stainless handle suitable for engraving/embellishment
- ☛ David Boye Dent
- ☛ 11mm Spyderco Round Hole
- ☛ Leaf-shaped flat-ground blade

## C28PET DRAGONFLY ETCHED

Our 'Going to church' version of the Dragonfly SS. Handle is acid etched for enhanced grip and guaranteed brother-in-law envy.

- ☛ Right hand tip-up clip
- ☛ Stainless acid etched handle
- ☛ David Boye Dent
- ☛ 11mm Spyderco Round Hole
- ☛ Leaf-shaped flat-ground blade

## C28 DRAGONFLY STAINLESS

Carbon-copy features as the Dragonfly lightweight with a full-stainless handle.

## C29 CRICKET STAINLESS

Round and symmetrical like a river stone. Its light enough to clip anywhere on your body or hold your money or tie in place. Chris Reeve inspired Integral Lock utilizes the back handle scale as the lock's liner keeping the knife slim using fewer wearable parts. Fine tip is a winner for fingernail cleaning, crafting or box cutting.

- ☛ Right hand tip-down clip
- ☛ Stainless handle can be engraved or embellished
- ☛ Hollow-ground blade
- ☛ Patented reverse "S" blade

## C29PET CRICKET ETCHED

Acid etch handle dresses things up while adding textured resistance.

- ☛ Right hand tip-down clip
- ☛ Acid etched stainless handle
- ☛ David Boye Dent
- ☛ Hollow-ground blade

## C30BK2 REMOTE RELEASE 2

For the sport/activity where clipping a knife above or below your waist makes sense: think PFD, spray skirt, harness, buoyancy equipment, carabiner, even bootlaces. Spring-Loaded Barrel Clip has a release pin positioned near the Spyderco Round Hole letting you unhook and open the folder in one motion without needing to rotate the knife in hand.

- ☛ Spring-loaded shackle clip
- ☛ FRN Volcano Grip™ handle inlaid with slip-free Kraton®
- ☛ 14mm Spyderco Round Hole
- ☛ Flat-ground blade
- ☛ Knife hangs tip up

### C36BK BLACK MILITARY MODEL

CLOSED	5-1/2"	140mm
OVERALL	9-1/2"	241mm
BLADE	4"	102mm
EDGE	3-11/16"	94mm
BLADE STEEL	CPM-S30V	
WEIGHT	4.25oz	120g
EDGE TYPES	P, PS	

### C36 MILITARY MODEL

CLOSED	5-1/2"	140mm
OVERALL	9-1/2"	241mm
BLADE	4"	102mm
EDGE	3-11/16"	94mm
BLADE STEEL	CPM-S30V	
WEIGHT	4.25oz	120g
EDGE TYPES	P, PS, S	

### C81BK BLACK PARA-MILITARY

CLOSED	4-3/4"	121mm
OVERALL	7-7/8"	200mm
BLADE	3-3/32"	81mm
EDGE	2-15/16"	74mm
BLADE STEEL	CPM-S30V	
WEIGHT	3.75oz	108g
EDGE TYPES	P, S	

### C81 PARA-MILITARY

CLOSED	4-3/4"	121mm
OVERALL	7-7/8"	200mm
BLADE	3-3/32"	81mm
EDGE	2-15/16"	74mm
BLADE STEEL	CPM-S30V	
WEIGHT	3.75oz	108g
EDGE TYPES	P, S	

#### C36 MILITARY MODEL

Someone asked Spyderco's chief designer "if your son or daughter were deployed, what knife would you send with them?"

The question raised three powerful considerations: 1. The blade had to have relentless cutting performance and edge life. 2. It had to be lightweight, ergonomically usable. 3. For field-use it needed to be made as indestructible and failsafe as humanly possible.

The resulting Military Model, or Millie, covered all considerations by pairing a CPM-S30V stainless blade with a slim G-10 handle that feels like a natural extension of the hand. Its open constructed handle makes cleaning/maintenance as simple as blowing or flushing out debris.

Uncomplicated, functional, manufactured to exacting standards.

- ☛ Made in Golden, Colorado
- ☛ Right hand tip-down clip
- ☛ Nested Linerlock®
- ☛ G-10 laminate handle scales
- ☛ Spine & choil jimping
- ☛ Screw construction
- ☛ 14mm Spyderco Round Hole (for a gloved hand)
- ☛ Modified clip-point blade

#### C36BK BLACK MILITARY MODEL

Military Model with black DLC coated non-reflective blade.

- ☛ Made in Golden, Colorado
- ☛ Right hand tip-down clip
- ☛ Nested Linerlock®
- ☛ G-10 laminate handle scales
- ☛ Spine & choil jimping
- ☛ Screw construction
- ☛ 14mm Spyderco Round Hole (for a gloved hand)
- ☛ Modified clip-point blade

#### C81 PARA-MILITARY

A two-thirds sized Military Model with a Nested Compression Lock™ rated hard use.

- ☛ Made in Golden, Colorado
- ☛ Right hand tip-down clip
- ☛ Nested Compression Lock™
- ☛ G-10 laminate handle scales
- ☛ Spine & choil jimping
- ☛ Screw construction
- ☛ 14mm Spyderco Round Hole (for gloved hand)
- ☛ Modified clip-point blade

#### C81BK BLACK PARA-MILITARY

Para-Military with black DLC coated non-reflective blade

- ☛ Made in Golden, Colorado
- ☛ Right hand tip-down clip
- ☛ Nested Compression Lock™
- ☛ G-10 laminate handle scales
- ☛ Spine & choil jimping
- ☛ Screw construction
- ☛ 14mm Spyderco Round Hole (for gloved hand)
- ☛ Modified clip-point blade



**C41BK NATIVE  
LIGHTWEIGHT**

CLOSED	3-15/16"	100mm
OVERALL	7"	178mm
BLADE	3-1/16"	87mm
EDGE	2-1/2"	64mm
BLADE STEEL	CPM-S30V	
WEIGHT	2.65oz	75g
EDGE TYPES	P, PS	

**C41BK BLACK  
NATIVE**

CLOSED	3-15/16"	100mm
OVERALL	7"	178mm
BLADE	3-1/16"	87mm
EDGE	2-1/2"	64mm
BLADE STEEL	CPM-S30V	
WEIGHT	2.65oz	75g
EDGE TYPES	PS	

**C78  
NATIVE 3**

CLOSED	4"	101mm
OVERALL	7-1/16"	179mm
BLADE	3-1/8"	80mm
EDGE	2-5/8"	66mm
BLADE STEEL	VG-10	
WEIGHT	2.8oz	81g
EDGE TYPES	P, PS	

**C63 CHINOOK 3  
BY JAMES KEATING**

CLOSED	4-7/8"	124mm
OVERALL	8-9/16"	217mm
BLADE	3-3/4"	95mm
EDGE	3-3/8"	86mm
BLADE STEEL	CPM-S30V	
WEIGHT	5.8oz	165g
EDGE TYPES	P	

**C41BK NATIVE LIGHTWEIGHT**

Every knife person has one folder they reach for without conscious thought, like a favorite tee-shirt or pair of shoes. That knife is comfortable. It's a natural extension of the hand. It cuts and carries with no complications every time it's drawn - no fuss or ongoing maintenance. We call it the Native. Its CPM-S30V blade and double handle indents magnify cutting control letting you grip tight and high on the handle, closer to the cutting edge. Our best folder value- USA made using top-tier powdered metallurgy blade steel.

- ☛ Made in Golden, Colorado
- ☛ Ambidextrous tip-up clip
- ☛ David Boye Dent
- ☛ Weight reducing spine swedge-grind
- ☛ Spine jimping
- ☛ Bi Directional Textured FRN Handle
- ☛ Hollow-ground blade

**C41BK NATIVE BLACK  
LIGHTWEIGHT**

Native Lightweight with a black DLC coated non-reflective blade.

- ☛ Made in Golden, Colorado
- ☛ Ambidextrous tip-up clip
- ☛ David Boye Dent
- ☛ Weight reducing spine swedge-grind
- ☛ Spine jimping
- ☛ Bi Directional Textured FRN Handle
- ☛ Hollow-ground blade

**C78 NATIVE 3**

Same ergonomic double handle indents as the Native but with smooth and textured handle ridges for tactile slip resistance in the hand. Japan made.

- ☛ Ambidextrous tip-up clip
- ☛ David Boye Dent
- ☛ Weight reducing spine swedge-grind
- ☛ Spine jimping
- ☛ Bi Directional Textured FRN Handle
- ☛ Hollow-ground blade

**C63 CHINOOK 3  
BY JAMES KEATING**

Master-At-Arms James Keating has a dedicated following in the world of edged cutting tools and martial arts. His Chinook features the thickest, hard use back lock Spyderco makes for chopping, blocking and passing. G-10 handle with serious finger choil and butt-end curve keeps the folder in hand and in check.

- ☛ Made in Golden, Colorado
- ☛ Right hand tip-up/tip-down clip
- ☛ David Boye Dent
- ☛ FRN handle
- ☛ Spine has a swedge-grind and jimping
- ☛ Hollow-ground blade

### C66-3 CENTOFANTE 3

CLOSED	4-1/2"	115mm
OVERALL	7-9/16"	191mm
BLADE	3-1/8"	79mm
EDGE	3"	77mm
BLADE STEEL	VG-10	
WEIGHT	2.5oz	71g
EDGE TYPES	P	

### C66-4 CENTOFANTE 4

CLOSED	4-1/2"	114mm
OVERALL	7-1/2"	190mm
BLADE	3"	76mm
EDGE	2-15/16"	75mm
BLADE STEEL	VG-10	
WEIGHT	2.5oz	71g
EDGE TYPES	P	

### C66-4 CENTOFANTE 4

Modified Wharncliffe blade profile.

- ✿ Right hand tip-up/tip-down clip
- ✿ David Boye Dent
- ✿ FRN handle
- ✿ Spine has a swedge-grind and jimping
- ✿ Hollow-ground blade

### C66-3 CENTOFANTE 3

Frank Centofante has selflessly shared his knifemaking knowledge with freshmen knifemakers his entire career. And who wouldn't want to learn the craft from The Godfather of Knifemaking and former President of the Knifemaker's Guild? Our two collaborations with Mr. C, both have FRN channeled handles with Palladian silver inlaid Spyder bugs.

- ✿ Right hand tip-up/tip-down clip
- ✿ David Boye Dent
- ✿ FRN handle
- ✿ Spine has a swedge-grind and jimping
- ✿ Hollow-ground blade

**NEW!**

### C75CF KIWI CARBON FIBER

CLOSED	3-3/16"	81mm
OVERALL	5-7/16"	138mm
BLADE	2-3/8"	60mm
EDGE	1-7/8"	47mm
BLADE STEEL	VG-10	
WEIGHT	1-5/8oz	47g
EDGE TYPES	P	

### C86 SPIN

CLOSED	2-7/16"	63mm
OVERALL	4-1/8"	105mm
BLADE	1-13/16"	46mm
EDGE	1-5/8"	41mm
BLADE STEEL	VG-10	
WEIGHT	1.35oz	38g
EDGE TYPES	P	

### C86PET SPIN ETCHED

CLOSED	2-7/16"	63mm
OVERALL	4-1/8"	105mm
BLADE	1-13/16"	46mm
EDGE	1-5/8"	41mm
BLADE STEEL	VG-10	
WEIGHT	1.35oz	38g
EDGE TYPES	P	

### C86PET SPIN ETCHED

Non-slip. Masculine-chic. Acid etched handle.

- ✿ Right hand tip-down clip
- ✿ Wharncliffe flat-ground blade
- ✿ Can be used as a tie clip, money clip or jewelry item

### C75CF KIWI CARBON FIBER

Gentlemen, are you dressing-up or dressing-down today? Doesn't matter because the Classic Kiwi goes either direction. Position of the blade's hole in relation to the handle pivot guarantees silk-smooth one-hand operation. Brushed steel handle bolsters with carbon fiber inlays and a finger choil.

- ✿ Clipless
- ✿ Stainless handle and bolsters/carbon fiber inlay
- ✿ Finger choil with finger indent behind
- ✿ Wharncliffe hollow-ground blade
- ✿ Suede carry case

### C86 SPIN

Our smallest CLIPIT has striking cutting ability in only a two-inch Wharncliffe blade. Chris Reeve style Integral Lock in a stainless handle laser engraved with a web design. Concentrated size, full-bore cutting.

- ✿ Right hand tip-down clip
- ✿ Wharncliffe flat-ground blade
- ✿ Can be used as a tie clip, money clip or jewelry item

**NEW!** C90CF STRETCH  
CARBON FIBER

CLOSED	4-7/16"	113mm
OVERALL	7-15/16"	202mm
BLADE	3-1/2"	89mm
EDGE	3-3/16"	81mm
BLADE STEEL	ZDP-189	
WEIGHT	4.4oz	126g
EDGE TYPES	P	

**NEW!**

## C94 UK PENKNIFE

CLOSED	4-1/16"	103mm
OVERALL	6-15/16"	175mm
BLADE	2-15/16"	74mm
EDGE	2-5/8"	67mm
BLADE STEEL	CPM S30V	
WEIGHT	2.4oz	69g
EDGE TYPES	P	

## C98 POLIWOG

CLOSED	3-3/8"	86mm
OVERALL	5-5/8"	143mm
BLADE	2-5/16"	59mm
EDGE	1-7/8"	48mm
BLADE STEEL	VG-10	
WEIGHT	4.1oz	116g
EDGE TYPES	P	



## C90CF STRETCH CARBON FIBER

Stretching something extends or draws it out beyond its ordinary or normal limits.

What started as a small hunting knife design 20 years ago has been stretched longer, thinner and into one of our most refined designs to date. Peel-ply carbon fiber handle, ZDP-189 blade. High wow-factor rating and performance without the pretense.

- ✿ 4-way Clip: Tip up/down left/right hand
- ✿ Screw together construction
- ✿ Full-length skeletonized steel liners
- ✿ Phosphor bronze bushings
- ✿ Peel Ply Carbon Fiber Handle
- ✿ David Boye Dent
- ✿ Enlarged opening hole
- ✿ Spine and choil Jimping
- ✿ Full flat-ground blade

## C94 UK PENKNIFE

In today's world, man's oldest tool is governed by restrictions in many countries including the United Kingdom. Legal parameters there apply to folding knives with blades that lock open. Our UK Penknife's blade is held open by a notched joint in the tang that produces resistance to closing. G-10 handle available in color-blend foliage green or safety orange.

- ✿ Made in Golden, Colorado
- ✿ Ambidextrous deep pocket tip-up wire clip
- ✿ Finger choil
- ✿ Spine jimping
- ✿ Double flat-ground blade
- ✿ G-10 handle in foliage green or safety orange

## C98 POLIWOG

Ambidextrous open-end Ball Bearing Lock™ unlocks when the ball is pulled back. Curved blade is shorter than its handle for responsive, refined handling. Grip indents position the hand on the handle for fatigue-free grip and cutting. Leave the Lightsaber at home.

- ✿ Ambidextrous tip-up clip
- ✿ Stainless handle with weight reducing cutouts
- ✿ Ball Bearing Lock®
- ✿ Flat saber-ground blade with spine swedge

## C103 P'KAL

CLOSED	4-1/8"	105mm
OVERALL	7-5/16"	186mm
BLADE	3-3/16"	81mm
EDGE	2-13/16"	81mm
BLADE STEEL	CPM-S30V	
WEIGHT	3.3oz	94g
EDGE TYPES	P	

**NEW!**C103TR P'KAL  
TRAINER

CLOSED	4-1/8"	105mm
OVERALL	7-5/16"	186mm
BLADE	3-3/16"	81mm
EDGE	N/A	
BLADE STEEL	440C	
WEIGHT	3.3oz	94g
EDGE TYPES	N/A	

C105 PERSIAN BY  
ED SCHEMP

CLOSED	3-15/16"	100mm
OVERALL	6-7/8"	175mm
BLADE	2-15/16"	75mm
EDGE	2-1/2"	64mm
BLADE STEEL	VG-10	
WEIGHT	3.5oz	99g
EDGE TYPES	P	

## C103 P'KAL

The term Pikal describes a marital arts genre. The modified word P'Kal describes a collaborative knife design between Spyderco and Shiwworks. Designed to carry in reverse grip (edge facing inward toward the user) the blade's point is positioned ready to move, poke and pierce. Out the blade's spine is a removable Emerson Wave Opener catching a pocket's top when drawing the knife and opening the blade in a single motion.

- ✿ Made in Golden, Colorado
- ✿ Ambidextrous tip-up clip
- ✿ Patented encased Ball Bearing Lock®
- ✿ G-10 handle with skeletonized steel liners
- ✿ Screw construction
- ✿ Flat-ground blade

## C103TR P'KAL TRAINER

Because of its specialized format, training in Pikal is essential. Non-sharpened blade lets you practice drills, motions and sparing. Red G-10 handle denotes it a trainer. Mirrors the live knife in size, balance and proportion.

- ✿ Made in Golden, Colorado
- ✿ Ambidextrous tip-up clip
- ✿ Patented encased Ball Bearing Lock®
- ✿ G-10 handle with skeletonized steel liners
- ✿ Screw construction
- ✿ Non-sharpened blade

## C105 PERSIAN BY ED SCHEMP

Ed Schempp wears a few hats: knifemaker, cutting competitor, wheat farmer, metallurgist. His Eastern inspired Persian blade gracefully sweeps upward to a fine tip. Protracted finger choil places and keeps the fingers just behind the cutting edge. Eastern influences meet western technology.

- ✿ Right hand tip-up clip with gold bug applique
- ✿ David Boye Dent
- ✿ Micarta handle with steel bolsters
- ✿ Hollow-ground blade with gold bug

**C109 “S”**

CLOSED	3-1/2"	89mm
OVERALL	5-15/16"	151mm
BLADE	2-7/16"	62mm
EDGE	2-1/8"	54mm
BLADE STEEL	M.I.M. 440C	
WEIGHT	2oz 55g	
EDGE TYPES	P	

**C110 LAVA  
BY CHAD LOS BANOS**

CLOSED	3-7/16"	87mm
OVERALL	5-5/16"	135mm
BLADE	1-7/8"	48mm
EDGE	1-9/16"	40mm
BLADE STEEL	VG-10	
WEIGHT	3oz	87g
EDGE TYPES	P	

**NEW!**

**C113CF  
CALY3  
CARBON  
FIBER**

**C113 CALY3**

CLOSED	4-1/16"	103mm
OVERALL	7"	178mm
BLADE	3"	76mm
EDGE	2-5/8"	67mm
BLADE STEEL	VG-10	
WEIGHT	3oz	86g
EDGE TYPES	P, S	

**C111 CAPTAIN BY  
JASON BREEDEN**

CLOSED	4-1/8"	105mm
OVERALL	7-3/16"	183mm
BLADE	3-1/16"	78mm
EDGE	2-15/16"	75mm
BLADE STEEL	VG-10	
WEIGHT	4.75oz	136g
EDGE TYPES	P	

**C109 “S” SILVER OR BLACK**

Using the latest in MIM technology, the metal injection molded “S” blade is matched with a web-cut aluminum handle. Nested Compression Lock, spine and choil jimping combine making one of the strongest, safest lightweights to enter the cutlery arena at only 2 ounces. Get webby with it. Black or silver handle.

- ✿ Ambidextrous tip-up wire tension clip
- ✿ Anodized aluminum handle
- ✿ Nested Compression Lock
- ✿ Full flat-ground blade

**C110 LAVA  
BY CHAD LOS BANOS**

Chad Los Banos is a Corrections Officer and knife designer. His Lava “doesn’t force the hand to fit the knife but rather the knife conforms to any sized hand”. A fistful of handle is attached to a small blade bending downward at the finger choil. This positions the cutting edge lower than the index finger and aligning the wrist. Comfortable control all the way around.

- ✿ Ambidextrous tip-up clip
- ✿ Spine and choil jimping
- ✿ David Boye Dent
- ✿ Stainless handle can be engraved or embellished
- ✿ Flat-ground blade

**C111 CAPTAIN  
BY JASON BREEDEN**

Jason Breeden’s design has perhaps the most unusual-looking blade in our lineup and is tangible proof function is our primary consideration. The advantages? Opposing cutting angles. The inward jutting angle acts like a Hawkbill blade holding what’s being cut pulled through to the sharp edge. Bellied and bulging, the tip arcs outward for close-up cutting with a sweeping wrist motion. On water or soil, forest or suburbia you’re covered with every conceivable cutting angle.

- ✿ Ambidextrous tip-up/tip-down clip
- ✿ Walker LinerLock
- ✿ Weight reducing spine swedge
- ✿ Spine and choil jimping
- ✿ G-10 handle with full length steel liners
- ✿ Hollow-ground blade

**C113 CALY3**

Some call it the finest folder design Spyderco’s created to date. Sized, shaped and sharpened solely with cutting performance and comfort in mind. Leaf-blade is thicker at the spine, with a distal taper to the edge and to the tip. Founded on the philosophy that the most comfortable, usable pocketknife is one that feels like a natural extension of your hand. G-10 ergonomic handle.

- ✿ Ambidextrous deep pocket tip-up wire clip
- ✿ Spine and choil jimping
- ✿ Mid-positioned backlock
- ✿ G-10 handle
- ✿ Flat-ground blade

**C113CF CALY3/CARBON FIBER**

Caly3 with carbon fiber handle and ZDP-189 steel blade laminated between two layers of 420J2 steel.

**NEW!** C114 PHOENIX  
BY HOWARD VIELE

CLOSED	4-9/16"	116mm
OVERALL	7-1/4"	184mm
BLADE	3"	76mm
EDGE	2-3/8"	60mm
BLADE STEEL	VG-10	
WEIGHT	4.1oz	115g
EDGE TYPES	P	

Production  
Prototype  
Pictured

Production  
Prototype  
Pictured

**NEW!**  
C122 TENACIOUS

CLOSED	4-7/16"	113mm
OVERALL	7-3/4"	197mm
BLADE	3-3/8"	86mm
EDGE	3-3/8"	86mm
BLADE STEEL	8Cr13Mov	
WEIGHT	4oz	115g
EDGE TYPES	P,PS,S	



LBK-3 LADYBUG3  
LIGHTWEIGHT

CLOSED	2-7/16"	62mm
OVERALL	4-3/8"	111mm
BLADE	1-15/16"	49mm
EDGE	1-11/16"	43mm
BLADE STEEL	VG-10	
WEIGHT	0.6oz	18g
EDGE TYPES	P, S	

LSS-3 LADYBUG3  
STAINLESS

CLOSED	2-7/16"	62mm
OVERALL	4-3/8"	111mm
BLADE	1-15/16"	49mm
EDGE	1-11/16"	43mm
BLADE STEEL	VG-10	
WEIGHT	1.2oz	34g
EDGE TYPES	P, S	

C114 PHOENIX  
BY HOWARD VIELE

Where's Howard? Highly regarded custom knifemakers don't disappear; they hibernate in their workshops emerging with new designs. In the years since we've worked with Howard Viele he designed the Phoenix. Incorporating a Spyderco Ball Bearing Lock into his latest project he creates a fluid, modern profile. Titanium handle is jacketed with cream Micarta while a deep finger choil and ricasso flow from tip to clip.

- ✦ Right hand tip-up clip
- ✦ Ball Bearing Lock
- ✦ Handle: Micarta over titanium
- ✦ Screw construction
- ✦ Hollow-ground blade

C122 TENACIOUS

Being tenacious means one holds fast. One is persistent and cohesive. It means being tough and tireless. All knife-worthy definitions for a worthy knife. G-10 handle is ergonomically milled for continuous fatigue-free use. Walker Linerlock with jimped liner. Lined lanyard hole. Full skeletonized steel liners. Features and finishing you'd expect on a pricier folder yet this one won't set you back a fifty.

- ✦ 4-way Clip: Tip up/down left/right hand
- ✦ Screw together construction
- ✦ Phosphor bronze bushings
- ✦ Skeletonized steel liners
- ✦ Enlarged opening hole
- ✦ Spine Jimping
- ✦ Flat-ground blade

LBK-3 LADYBUG3  
LIGHTWEIGHT

A high performance matter separator who's cutting ability shouldn't be underestimated or written off as just another keychain knife. Blade is thick from heel to tip. Spine Jimping. Bi-Directional Texture™ slip resistant FRN handle.

- ✦ Clipless
- ✦ Lanyard hole
- ✦ David Boys Dent
- ✦ Spine jimping
- ✦ Enlarged Spyderco Round Hole
- ✦ Hollow-ground blade

LSS-3 LADYBUG3  
STAINLESS

All stainless steel version of the Ladybug3.

- ✦ Clipless
- ✦ Lanyard hole
- ✦ David Boys Dent
- ✦ Spine jimping
- ✦ Enlarged Spyderco Round Hole
- ✦ Hollow-ground blade



## ALL SHARP, NO RUST...

Rust /'rust/ n : The red or orange coating that forms on the surface of iron when exposed to air and moisture, consisting chiefly of ferric hydroxide and ferric oxide formed by oxidation.

And we hate it. It's the nightmare of knife maintenance hanging around like an unwanted house guest. Today's knife blade steels are primarily iron, containing anything from trace levels up to 3% or more carbon added. The more carbon, the harder and longer a blade holds a sharp cutting edge. The Achilles Heel of high carbon steel is chloride. When chloride and carbon steel meet their interaction results in rust, pitting and corrosion.

People in humidity, divers, paddlers, boaters, fisher-people, even perspiring athletes have few rust-free choices. High carbon knives pay off with long-term sharpness but demand regular cleaning and maintenance. Low-carbon steel knives remain rust free but sharp-free as well, since the steel is soft, offering little cutting ability or longevity when you may need it most.

## H-1: What is it and why should I care?

H-1 is a precipitation-hardened alloy with .1% nitrogen instead of carbon. Nitrogen performs like carbon in the steel's matrix. Nitrogen and chloride have no affiliation to each other and physically cannot induce rust production.

H-1 holds a keen edge much like existing premium carbon-based knife steels. Independent testing by Crucible Steel Inc. shows H-1 work-hardens at its' cutting edge when processed and sharpened. Friction increases its Rc hardness, elevating tensile strength and durability. Simply put, H-1 stays 100% rust free in fresh/saltwater and in humid conditions and the steel is hard enough to hold and take a performance sharp edge.

Having a rust free blade would be irrelevant if the rest of package fell apart at the sight of salt or liquid. All Salt Series knives' internal components and titanium clips are rust impervious as well.

Dive in. No rust. No worries.

## C88 SALT 1

CLOSED	4"	102mm
OVERALL	7"	177mm
BLADE	3"	76mm
EDGE	2-11/16"	68mm
BLADE STEEL	H-1	
WEIGHT	2oz.	57g
EDGE TYPES	P, S	

## C91 PACIFIC SALT

CLOSED	4-15/16"	125mm
OVERALL	8-5/8"	219mm
BLADE	3-13/16"	97mm
EDGE	3-3/8"	86mm
BLADE STEEL	H-1	
WEIGHT	3oz	86g
EDGE TYPES	P, S	

## C89 ATLANTIC SALT

CLOSED	4-5/8"	116mm
OVERALL	8-3/16"	209mm
BLADE	3-5/8"	93mm
EDGE	3-7/16"	86mm
BLADE STEEL	H-1	
WEIGHT	2.6oz	75g
EDGE TYPES	P, S	

**NEW!**

## C118 SAVER SALT

CLOSED	4-3/32"	104mm
OVERALL	7-3/16"	182mm
BLADE	3-3/32"	79mm
EDGE	2-5/8"	67mm
BLADE STEEL	H-1	
WEIGHT	2.2oz	61g
EDGE TYPES	S	

Production  
Prototype  
Pictured

Our water-use folders are thick and robust at the tip for added strength at the precise spot where a blade sees repeated use. 14mm Spyderco Round Hole for easier opening with gloved, wet or cold hands. Slip resistant handle with lanyard hole attachment.

## C88 SALT 1

- ☛ Ambidextrous tip-up titanium clip
- ☛ Black or Marine Yellow FRN Volcano Grip handle
- ☛ David Boye Dent
- ☛ Lanyard hole for cord attachment in water
- ☛ 14mm Spyderco Round Hole
- ☛ Hollow-ground blade

## C91 PACIFIC SALT

- ☛ Ambidextrous tip-up titanium clip
- ☛ Black or Marine Yellow FRN Volcano Grip handle
- ☛ David Boye Dent
- ☛ Lanyard hole for cord attachment in water
- ☛ 14mm Spyderco Round Hole
- ☛ Hollow-ground blade
- ☛ Spine Jimping
- ☛ Hollow-ground blade

## C89 ATLANTIC SALT

The lore of sheepfoot blades has several founding theories. Common sense validates the mariner's theory. It states rounded-tipped knives were preferred equipment on ships because if dropped from a mast-rigging they couldn't puncture cargo or crew on the way down hitting deck. Also having no pointed tip limited a thirsty sailor's chance of 'lawless knife use' when blowing off steam in port after months at sea. These benefits seafarers found are equally embraced by rescue workers and Save & Serve pros today. Safe cutting without a pointed tip.

- ☛ Ambidextrous tip-up titanium clip
- ☛ Black or Marine Yellow FRN Volcano Grip handle
- ☛ David Boye Dent
- ☛ Lanyard hole for cord attachment in water
- ☛ 14mm Spyderco Round Hole
- ☛ Hollow-ground blade

## C118 SAVER SALT

Two thirds sized version of the Atlantic Salt.

- ☛ Ambidextrous tip-up titanium clip
- ☛ Black or Marine Yellow FRN Volcano Grip handle
- ☛ David Boye Dent
- ☛ Lanyard hole for cord attachment in water
- ☛ 14mm Spyderco Round Hole
- ☛ Hollow-ground blade

**NEW!** C120 MARINER SALT

CLOSED	4-3/4"	121mm
OVERALL	8-7/16"	214mm
BLADE	3-3/4"	95mm
EDGE	3-7/16"	87mm
BLADE STEEL	H-1	
WEIGHT	4.9oz	138g
EDGE TYPES	S	

Production Prototype Pictured



**NEW!** FB21 CASPIAN SALT POINTED TIP

CLOSED	N/A	
OVERALL	7-5/16"	186mm
BLADE	3-1/8"	79mm
EDGE	3-1/8"	79mm
BLADE STEEL	H-1	
WEIGHT	2.75oz	79g
EDGE TYPES	PS	

Production Prototype Pictured



Production Prototype Pictured

**NEW!** FB22 CASPIAN2 SALT BLUNT TIP

CLOSED	N/A	
OVERALL	7-5/32"	183mm
BLADE	3"	79mm
EDGE	3"	76mm
BLADE STEEL	H-1	
WEIGHT	2.75oz	79g
EDGE TYPES	PS	

C106 TASMAN SALT

CLOSED	4"	102mm
OVERALL	6-13/16"	173mm
BLADE	2-15/16"	75mm
EDGE	2-1/2"	64mm
BLADE STEEL	H-1	
WEIGHT	2oz	57g
EDGE TYPES	P, S	

C106 TASMAN SALT

The Hawkbill blade curves itself around marine rope, netting and webbing, holding what you're cutting against the sharp edge. Ideal for downward, pulling cuts done safely at arm's length. Rope, line netting and poly-propylene, say goodbye.

- ☛ Ambidextrous tip-up titanium clip
- ☛ Black or Marine Yellow FRN Volcano Grip handle
- ☛ David Boye Dent
- ☛ Lanyard hole for cord attachment in water
- ☛ 12mm Spyderco Round Hole
- ☛ Hollow-ground blade

C120 MARINER SALT

Our classic Mariner Model returns with an H-1 steel blade. The siren's call for boaters and sailors with its Sheepfoot blade, slim profile, shackle key/drying vent. Now with a 100% rust free blade, handle and clip.

- ☛ Right hand tip-down titanium clip
- ☛ David Boye Dent
- ☛ Lanyard hole for cord attachment in water
- ☛ Shackle key/drying vent
- ☛ 14mm Spyderco Round Hole
- ☛ Hollow-ground blade

FB21 CASPIAN SALT  
FB22 CASPIAN2 SALT

Imagine: once a knife was in your hand it couldn't fall out? What if while holding it, your fingertips were unencumbered, able to pick up, touch and adjust equipment? This is what happens once your index finger fits through the Fred Perrin inspired index finger hole. Constructed from a single piece of H-1 steel overlaid with scale-grip FRN. Deep-seated jimping above and below the hole keep it all grippy. Spine-mounted line cutter. Blade and handle lanyard holes. Fits in a tension-spring plastic sheath that let's you slide the blade in left or right handed with an audible click telling you you're locked & loaded, secure and ready to move. The perfect storm in retention and performance.

- ☛ Ambidextrous plastic spring-loaded sheath
- ☛ 1" (25mm) index finger hole for gloves or large hands
- ☛ Black FRN overlays are Bi-Directionally Textured™
- ☛ Hollow-ground single edged blade
- ☛ Available with blunt or pointed tip

## FB23 AQUA SALT

CLOSED	N/A	
OVERALL	9-1/4"	235mm
BLADE	4-11/16"	120mm
EDGE	4-1/4"	108mm
BLADE STEEL	H-1	
WEIGHT	4.2oz	119g
EDGE TYPES	P, S	



## FB23 AQUA SALT

Deep-cut Volcano Grip grabs your palm like sandpaper, so cut, saw and chop with confidence. Thick, tapered H-1 utility blade is full-tang. Blade and handle lanyard holes offer varying backup attachment options.

- 🌀 Kydex sheath with multi-position G-Clip
- 🌀 Hollow-ground blade
- 🌀 Spine swedge-grind
- 🌀 FRN Volcano Grip handle comes in black or marine yellow
- 🌀 Bi-Directional Texturing™



Production  
Prototype  
Pictured

**NEW!**

FB20 ROCK SALT  
BY ED SCHEMPF

OVERALL	10-1/2"	311mm
BLADE	6-3/4"	171mm
EDGE	6"	152mm
BLADE STEEL	H-1	
WEIGHT	9.2oz	261g
EDGE TYPES	P	

FB20 ROCK SALT  
BY ED SCHEMPF

7" full-tang H-1 camp knife with oversized hand-guard (ricasso) positioned behind a balanced deep-cut finger choil. Full-bodied blade tapers with sweeping center-line grind. Pinned FRN handle scales are profiled to the palm, fitting even smaller hands. Two lanyard attachments: Blade lanyard hole allows a short thong though the tang keeping your hand choked up high on the handle while swinging and chopping. Handle lanyard accommodates a longer wrist thong.

- 🌀 Kydex sheath with multi-position G-Clip
- 🌀 Blade and handle lanyard holes
- 🌀 Hollow-ground blade
- 🌀 Black, Bi-Directionally Textured™ FRN overlaid scales.



## FIXED BLADE KNIVES

A fixed blade knife is a cutting implement in its rawest form. From serviceably crude to overly sophisticated, humans have been chipping away stone pieces and pounding steel into blades for millennia. A fixed blade remains just that. A solid piece of material (blade), made easier to use by attaching a handle and made higher performing by today's science-generated materials. Many custom knifemakers making fixed blades do so in time honored traditional ways, heating and forging and handcrafting their art and designs. The custom knifemakers we are fortunate enough to collaborate with have offered up their designs which we are able to bring to the public. They are artisans. Enjoy their designs.

**FB01/FB02  
BILL MORAN**

CLOSED	N/A	
OVERALL	8"	203mm
BLADE	3-7/8"	99mm
EDGE	3-1/2"	89mm
BLADE STEEL	VG-10	
WEIGHT	3oz	84g
EDGE TYPES	P	

**FB15 STREET BEAT  
BY FRED PERRIN**

CLOSED	N/A	
OVERALL	7-1/8"	182mm
BLADE	3-1/2"	89mm
EDGE	3-1/4"	83mm
BLADE STEEL	VG-10	
WEIGHT	3.2oz	92g
EDGE TYPES	P	

**FB01/FB02 BILL MORAN**

Bill Moran founded the American Bladesmith Society and wrote the playbook of American knifemaking. His passing in 2006 left a vacuum in our industry and we honor his legacy with two fixed blade collaborations: FB01 has an upswept, Bowie-style blade. FB02 an outdoor inspired drop-point blade. Both blades are thick, tapered from the spine with uniformly ground tips and the blades and handles are equally weighted for balanced control.

**FB01: Trailing Point blade**  
**FB02: Drop Point blade**

- ✿ Kydex Sheath with multi-position G-Clip
- ✿ FRN handle with non-slip Kraton inlays
- ✿ Wrist lanyard hole in blade
- ✿ Flat-ground Trailing Point or Drop Point blade

**FB15 STREET BEAT  
BY FRED PERRIN**

Fred Perrin has had many professions. French Army Commando, world-ranked martial artist, family man and now Parisian knife artisan. He designs to suit himself, much to our appreciation. Half-moon Micarta handle choil creates a sweet spot between an equal weighted blade and handle that is so perfectly balanced it's like driving a high-performance car. Full steel slab construction.

- ✿ Boltaron sheath with multi-position G-Clip attachment
- ✿ Two lanyards: Wrist lanyard and handle lanyard
- ✿ Spine jimping
- ✿ Full flat-ground blade
- ✿ Skeletonized tang for balance and lighter weight



**FB16 FORESTER  
BY JERRY HOSSOM**

OVERALL	15-9/16"	395mm
BLADE	9-1/8"	232mm
EDGE	9-1/8"	232mm
BLADE STEEL	N690Co	
WEIGHT	16.8oz	456g
EDGE TYPES	P	

**FB17 FORAGER  
BY JERRY HOSSOM**

OVERALL	14"	356mm
BLADE	7-1/2"	190mm
EDGE	7-1/2"	190mm
BLADE STEEL	N690Co	
WEIGHT	14.7oz	417g
EDGE TYPES	P	

**FB18 WOODLANDER  
BY JERRY HOSSOM**

OVERALL	12-5/8"	321mm
BLADE	6-3/32"	155mm
EDGE	6-3/32"	155mm
BLADE STEEL	N690Co	
WEIGHT	13.4oz	380g
EDGE TYPES	P	

**JERRY HOSSOM FIXED BLADES**

Jerry Hossom has custom crafted knives for more than twenty-five years and professionally so for the last ten. His foursome of large fixed blades go hand in hand with the outdoors. They dominate any cutting challenge Mother Nature deals out be it little or large. All sizes include: Full-bellied cutting edges, upswept tips and rounded spines. A handguard behind the cutting edge, a finger choil and deep jimping on the thumb ramp all keep the hand engaged on the handle whether lightly cutting or all out chopping.

**FB16 FORESTER  
BY JERRY HOSSOM**

- ✿ Made in Italy
- ✿ Full steel and slab construction
- ✿ Boltaron sheath with multi-position G-Clip
- ✿ Wrist and handle lanyard
- ✿ Contoured Micarta handle
- ✿ Flat-ground blade

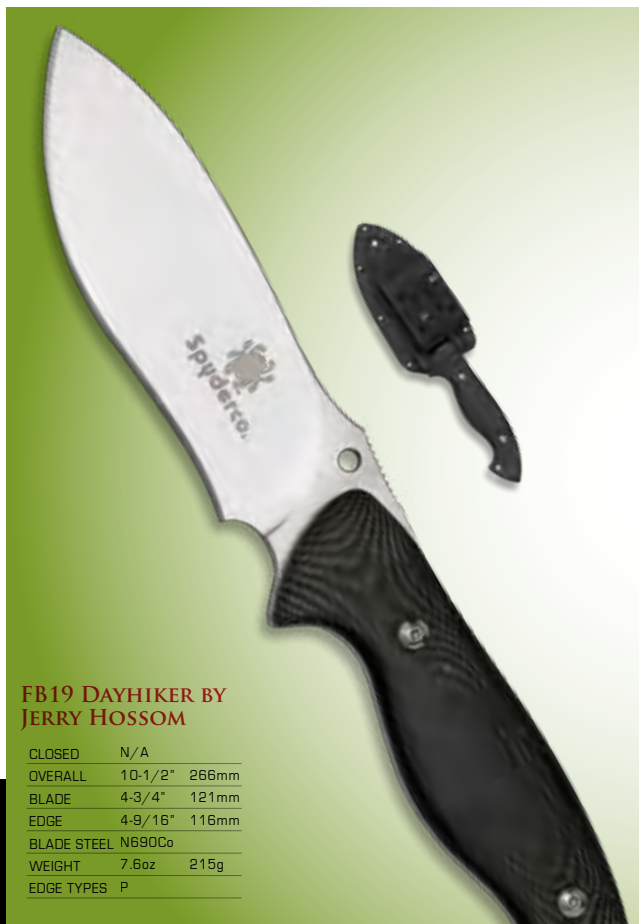
**FB17 FORAGER  
BY JERRY HOSSOM**

- ✿ Made in Italy
- ✿ Full steel and slab construction
- ✿ Boltaron sheath with multi-position G-Clip
- ✿ Wrist and handle lanyard
- ✿ Contoured Micarta handle
- ✿ Flat-ground blade

**FB18 WOODLANDER  
BY JERRY HOSSOM**

- ✿ Made in Italy
- ✿ Full steel and slab construction
- ✿ Boltaron sheath with multi-position G-Clip
- ✿ Wrist and handle lanyard
- ✿ Contoured Micarta handle
- ✿ Flat-ground blade





**FB19 DAYHIKER BY JERRY HOSSOM**

CLOSED	N/A
OVERALL	10-1/2" 266mm
BLADE	4-3/4" 121mm
EDGE	4-9/16" 116mm
BLADE STEEL	N690Co
WEIGHT	7.6oz 215g
EDGE TYPES	P

**FB19 DAYHIKER BY JERRY HOSSOM**

- ✿ Made in Italy
- ✿ Full steel and slab construction
- ✿ Boltaron sheath with multi-position G-Clip
- ✿ Wrist and handle lanyard
- ✿ Contoured Micarta handle
- ✿ Flat-ground blade



**KX06P YANG KITCHEN KNIFE**

CLOSED	N/A
OVERALL	11-1/16" 280mm
BLADE	6" 152mm
EDGE	5-15/16" 151mm
BLADE STEEL	VG-10
WEIGHT	3.125oz 90g
EDGE TYPES	P

**KX06S YIN KITCHEN KNIFE**

CLOSED	N/A
OVERALL	11-1/16" 280mm
BLADE	6" 152mm
EDGE	5-15/16" 151mm
BLADE STEEL	VG-10
WEIGHT	3.125oz 90g
EDGE TYPES	S

**KX06S YIN KITCHEN KNIFE**

**KX06P YANG KITCHEN KNIFE**

Yin and Yang are opposing yet complementary principles found in all objects and processes. Their paradoxical forces in the kitchen together are unstoppable in food preparation. Yin: ebony wood handle and SpyderEdge serrations. Yang: blonde birchwood handle and PlainEdge. Both have 3/4 length tangs and are double riveted for tight, solid blade/handle connection. Sold separately

- ✿ Full-flat ground blades
- ✿ Finger guard between blade and handle
- ✿ Hand washing is recommended

# SPYDERENCH



## T01 SPYDERENCH

CLOSED	4-9/16"	116mm
OVERALL	6-7/8"	175mm
BLADE	2-1/2"	64mm
EDGE	2-1/4"	57mm
BLADE STEEL	AUS-8	
WEIGHT	7.8oz	222g
EDGE TYPES	PS	

### T01 SPYDERENCH

Designed by an aerospace engineer and Spyderco's R&D. It's unlike your run of the mill multitool with a locking full-sized, one-hand open knife blade. Body is investment-cast 17-4ph corrosion resistant stainless steel and features:

- Adjustable wrench with 9/16" opening capacity
- 2-setting slip joint plier
- Four screwdriver bits: #2 and #3 Phillips-head #1 and #2 flat-head (housing accepts any standard sized bit including Allen and Torx® wrenches)
- Extended bit with a flat- and Phillips-head enabling access into tight places (ideal for "tunneled" electronic repairs).
- Extended bit is also a diamond-coated file with concave, convex and flat sharpening surface.

## "FIRST WE MADE THINGS SHARP, THEN WE MADE SHARP THINGS™"

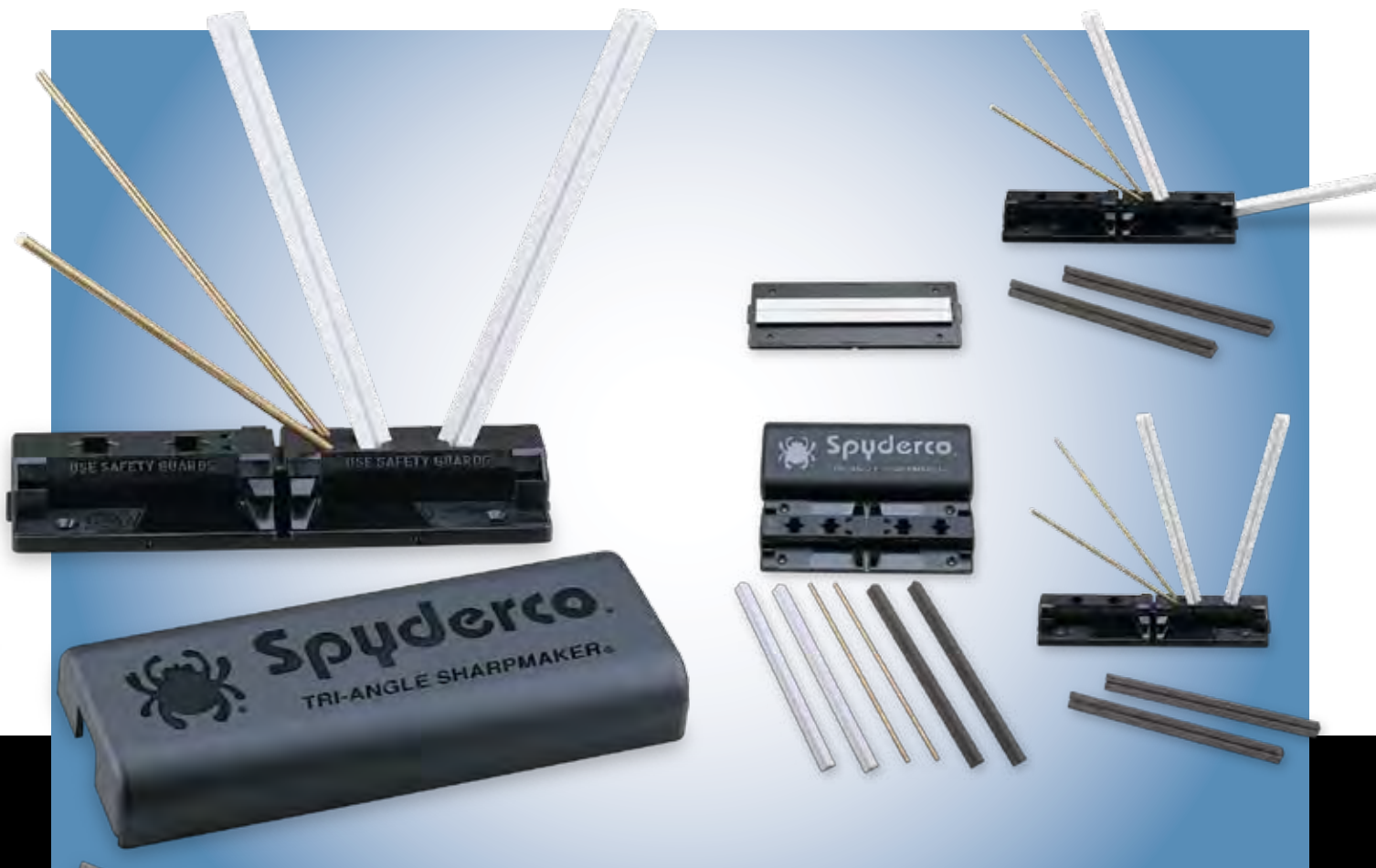
It might surprise people that Spyderco's initial product was not a knife at all but a ceramic sharpening system. Our sharpening stones are Alumina Ceramic, manufactured in the U.S. using a process combining a bonding agent with alumina particles (that are actually synthetic sapphires 15 to 25 microns in size). We shape them, then kiln fire them in temperatures exceeding 3000 degrees F (1649°C). On a Mohs hardness scale, Alumina Ceramic stones measure 9 (out of 10) and don't require lubricants such as oil or water while using.

The Mohs Scale of Mineral Hardness characterizes the scratch resistance of various minerals through the ability of a harder material to scratch a softer material. Talc: 1 Pure Gold: 3 Hardened Steel: 7 Spyderco sharpening stones: 9 Diamond: 10

Medium grit brown stones are open-cell stones (friable) and will wear out over time and repeated use. Their abrasive quality is ideal for removing steel stock or for dull blade and edges requiring re-profiling. Our white fine and ultra-fine grit stones are closed-cell ceramic and won't wear with usage or time. They're less abrasive, excelling at polishing and professionally finishing an edge. With any ceramic or glass implement, they will break or chip if dropped or roughly handled. They're temperature resistant and dishwasher and autoclave safe.



When sharpening, you change the blade's shape by removing microscopic steel particles. Eventually the stones become loaded up, saturated in these particles. Removing the residue restores the stone's sharpening effectiveness. Wash stones in fresh water and scrub with powdered abrasive cleanser and a plastic scouring pad. Rinse and air dry.



## 204MF TRI-ANGLE SHARPMAKER

204MF includes one pair medium-grit (brown) triangle stones for aggressive sharpening and one pair of fine-grit (white) triangle stones for professional-grade finishing. Their patented triangular shape sharpens PlainEdges on the flat sides and SpyderEdges (serrations) on the corners. A groove running the stone's length sharpens pointed items such as fishhooks, darts, awls, punches. Keyed slots/holes in the ABS plastic base precisely pre-set the stone's sharpening angle to a 30° (15° each side) or 40° (20° each side) for thick and thin profiled knife blades. On the end of the base is a 12.5° scissor setting. When turned over, the base's underside accommodates two side-by-side stones [flat side up] for benchstone sharpening.

Plastic lid snaps halfway over the base creating a stable handhold and a pair of brass safety rods protect the user's hands during sharpening. Portable, all components fit into the base and the lid snaps as a cover. Base can be bolted to a table or counter-top for permanent attachment. Instruction DVD and booklet included.

## 204 DVD TRI-ANGLE SHARPMAKER INSTRUCTION DVD

Detailed how-to for sharpening everything from a man's wit to a woman's tongue. Seriously, it focuses on sharpening techniques for plain and serrated edges, edged tools and household implements with the Tri-Angle Sharpener.



204D DIAMOND  
TRI-ANGLE

204M1  
MEDIUM  
TRI-ANGLE STONE

204F1  
FINE  
TRI-ANGLE STONE

204UF1  
ULTRA-FINE  
TRI-ANGLE STONE

302F FINE  
BENCHSTONE

Production  
Prototype  
Pictured

302M MEDIUM  
BENCHSTONE

302UF  
ULTRA-FINE  
BENCHSTONE

**NEW!**  
306UF  
BENCHSTONE

## 204UF1 TRI-ANGLE SHARPMAKER STONE ULTRA-FINE

Ultra-fine stones tighten and smooth the cutting edge's scratch pattern for an even keener, hair-popping professional edge. Fits the 204 Sharpmaker system. Sold individually. 7" X .5" [178mm X 13mm]

## 204F1 TRI-ANGLE SHARPMAKER STONE FINE

Designed for professional-grade finishing and polishing. Fits the 204 Sharpmaker system. Sold individually. 7" X .5" [178mm X 13mm]

## 204M1 TRI-ANGLE SHARPMAKER STONE MEDIUM

Medium triangle noticeably sharpens and removes stock. Fits the 204 Sharpmaker system. Sold individually. 7" X .5" [178mm X 13mm]

## 204D DIAMOND TRI-ANGLES

Diamond abrasives are recommended for stock removal, restoration and aggressively re-shaping, re-profiling and re-beveling cutting edges. Fits the 204 Sharpmaker system. Sold in a pair. 7" X .5" [178mm X 13mm]

## 302UF / 302F / 302M BENCHSTONES

Spyderco benchstones effectively sharpen wide tools like chisels, large blades, woodworking equipment, plane irons and ski/snow-board edges. Available: Ultra-Fine, Fine or Medium grit. Sold individually in a polymer case with rubber skid-stopping tabletop feet. 2" X 8" X 1/5" [51mm X 203mm X 13mm]

🌀 **302UF Benchstone Ultra Fine - Black box**

🌀 **302F Benchstone Medium - Dark Blue Box**

🌀 **302M Benchstones Fine -Light Blue Box**

## 306UF BENCHSTONE 3" X 8" ULTRAFINE

3" x 8" [76.2mm x 203.2mm] ultra-fine ceramic benchstone is flat, thin and ultra smooth for professionally finishing and sharpening wide tools: chisels, large blades, wood-working equipment, plane irons, even ski/snowboard edges. Ultra-fine grit tightens and smooths the edge's scratch pattern for a keener, hair popping edge. Light enough for hand held use, taking the sharpening surface directly to larger items.

## POCKET STONES



303MF  
DOUBLESTUFF

303F  
POCKETSTONE  
FINE

303M  
POCKETSTONE  
MEDIUM

### 303F POCKET STONE FINE 303M POCKET STONE MEDIUM

Slip-into-a-pocket, palm-sized rectangular pocket stones head to the hills for field-use and honing smaller items. Sold separately.

- ☛ 303M medium grit stone (brown)
- ☛ 303F fine grit stone (white)

Spyderco embossed smooth leather carrying case.

1" X 5" x 1/8" (25mm X 127mm X 3.2mm)

### 303MF DOUBLESTUFF

Double the sharpening potential- Doublestuff bonds together a fine and a medium 303 stone.

Smooth leather carrying case.

1" X 5" x 1/4" (25mm X 127mm X 6.4mm)

## CERAMIC FILES & PROFILE SET



701MF  
PROFILE SET

400F  
CERAMIC  
FILES

### 400F CERAMIC FILES

Gunsmiths, jewelers and dental techs require specialty-shaped sharpening stones for honing and deburring hardened molds, even carbides. Fine-grit stones. 4 shapes: Round, square, triangle, and slip (teardrop). Stone approx: 5" X 1/4" (127mm X 6.4mm)

- ☛ 400F 4-File Set in a snap-close suede pouch.
- ☛ 400F1R -Round Ceramic File
- ☛ 400F1S -Square Ceramic File
- ☛ 400F1T -Triangular Ceramic File
- ☛ 400F1SP -Slip Ceramic File

### 701MF PROFILE SET

Portable Profile stones are elliptically shaped with three sharpening surfaces for sharpening PlainEdges. 2. Small radius for SpyderEdges (serrations). 3. The groove running the stone's length fits pointed objects (darts, fish-hooks, awls). Fine grit (white stone) or Medium Grit (brown stone).

Stones sold separately or as a pre-packaged pair.

3/4" X 8" X 1/4" (19mm X 203mm X 6.4mm)

Helpful hint\* Using the stone on top of the split-suede case keeps it slip-free while table-top sharpening.

- ☛ 701F Profile Fine
- ☛ 701M Profile Medium
- ☛ 701MF Two-Stone Set



#### C10 ENDURA 4 LIGHTWEIGHT PARTS KIT

#### C11 DELICA 4 LIGHTWEIGHT PARTS KIT

Internal replacement parts kit for our C10BK Endura or C11BK Delica Lightweights.

- D-bolt for pivot
- Torx screw for D-bolt
- Washer for pivot D-bolt,
- Phosphor bronze washers for pivot
- Skeletonized stainless steel liners
- D-bolt for lockbar
- Torx screw for D-bolt
- Backspacer
- D-bolts for backspacer
- Torx screw for D-bolts

**NEW!**



**NEW!**

#### HATGY SPYDERCO HAT

Hats off to our U.S. military personnel. Adjustable. U.S.A. made combed cotton. Military inspired, Spyderco innovated.

#### TSGY SPYDERCO MOLECULE TEESHIRT

Steel Junkies Tee. Shirt represents austenite and martensite steel molecules. 6.1oz pre-shrunk 100% cotton. Doubled stitched neck, sleeve and bottom hem. Charcoal Heather Gray. S-M-L-XL-XXL.



C12C  
ZIPPERED POUCH



CT01 TOWER  
DISPLAY

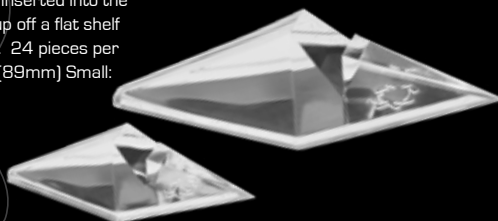


#### CT01 TOWER DISPLAY

Freestanding countertop display is bottom hinged with lever lock top closure (includes 2 keys). Displays 6 knives. High impact acrylic. Footprint: 6" X 10" (152mm X 270mm) Height: 16-7/8" (429mm) Weight (empty): 30 oz (850g)

#### CT02/CT03 KNIFE STANDS

Crystal acrylic wedge holds a knife at a 45° when blade is inserted into the cutout. Lifts a knife up off a flat shelf ready to get noticed. 24 pieces per box. Large: 3-1/2" (89mm) Small: 2-1/2" (64mm).



#### SP1/SP2 SPYDERPACS

Small or large knife SpyderPacs transport and display any knife collection at its best. Heavy denier polyester Cordura® with clear viewing pockets. Velcro closures on top and side flaps keep contents snug, scratch-free and contained. Adjustable shoulder strap. Embroidered Spyderco logo.

Spyderco knives are designed and built for use as cutting tools. Use of our knives for any purpose other than cutting is considered abuse. As with any tool Spyderco knives can wear out. They may also fail to perform if not used or cared for properly. If your knife has been put to hard use for a long period of time, it is possible that the useful life of the Spyderco product has been exceeded and Spyderco will be unable to perform any work upon the knife that will improve the condition thereof.

#### WARRANTY INFORMATION:

- Spyderco warrants that all of our products are free from defects in material and workmanship.
- Repairs to your knife performed by any source other than Spyderco Inc. unconditionally voids the knife's warranty.
- Spyderco's warranty does not cover damage caused by abuse, misuse, loss, improper handling, alterations, accident, neglect, disassembly, or improper sharpening.
- If a knife fails to function as it was designed, we will examine its condition upon its return to Spyderco, identify why it failed and respond in an appropriate manner.
- If we determine there is a defect in the manufacture/materials/workmanship, Spyderco will repair, or replace that product with the same model or one of equal value at its own expense.
- If a problem with a returned knife is determined to be caused by something other than a defect in manufacture/materials/workmanship, Spyderco will inform you of whether the product can be repaired and the cost to you of having Spyderco implement such repair (see below). Upon agreement and payment we will perform the repair.
- If Spyderco is unable to improve the condition of the knife, we will return it to you with the recommendation it be retired from use. All costs associated with shipment of the product(s) are the responsibility of the customer.

#### REPAIR INFORMATION:

- Sharpening - Complimentary on PlainEdge, SpyerEdge or CombinationEdges provided the edge of the knife is not severely damaged - Please include \$5.00USD shipping and handling. For the following repairs, please include \$20.00USD plus \$5.00USD shipping and handling:
- Blade or Edge - Broken tip from prying or dropping, destroyed edge due to improper sharpening, loose blade from abuse, rust due to neglect or other blade issues. (Spyderco is unable to replace blades in most models)
- Clips - Stripped screw holes, screws sheered off, broken or missing clip or other clip issues.
- Scale or Handle - Missing scale screws, knife action stiff, missing Kraton, or other handle issues.

#### WHERE TO SEND YOUR KNIFE:

When sending your knife for warranty or repair include a description of the problem and how it occurred. Include: Company or individual name, return address (no P.O. Boxes please) daytime phone number. We recommend shipping UPS or registered mail for your tracking purposes.



Attn.: Warranty and Repair  
820 Spyderco Way,  
Golden, CO 80403 USA

www.Spyderco.com  
Phone: 800-525-7770  
303-279-8383  
Fax: 303-278-2229

Email: customerservice@spyderco.com

#### BASIC KNIFE MAINTENANCE:

Insure safe operation by regularly inspecting the knife's interior for lint, obstructions, etc. Clean the lock well and inside the handle using a toothpick, hot water and detergent. Rinse with fresh water, dry inside and out and lubricate steel components with oil/silicone. A sharp knife makes cutting easier and safer and lengthens its usable life. Like any tool, knives do wear out.

#### RELEASE, ASSUMPTION OF RISK, WAIVER OF LIABILITY AND INDEMNITY AGREEMENT.

By purchasing any item produced by Spyderco, Inc. the buyer assumes responsibility to ascertain and follow all applicable federal, state, local and international laws in having, owning, carrying, shipment, transporting, and use of any Spyderco product.

The buyer expressly agrees to indemnify and hold harmless Spyderco, Inc. for all claims resulting directly or indirectly from the purchase, ownership, transportation or use of the item in violation of applicable federal, state and local laws or regulations. Spyderco is not liable for misuse of any Spyderco knife or product purchased either directly from Spyderco or from a dealer/distributor. You must be 18 years of age to purchase Spyderco knives. Spyderco's warranty gives you certain legal rights. You may have other rights, which vary in different states and municipalities.

\* Information included in this catalog is subject to change without notice. Modification of products, materials, measurements, technical specifications and availability can occur. Contact your local Spyderco dealer for information.

**USA** Contract Holder  
FSS Contract GS-07F-93425

# byrd 2008 Product Guide



## IT IS NOT ONLY FINE FEATHERS THAT MAKE FINE BIRDS.

Byrds are our entry level line of knives and pocket tools. They're designed, produced and imported by Spyderco but are a stand-alone knife line, independently branded and perceived from Spyderco's well respected CLIPIT line. byrds present astute knife buyers with hardworking knife and tool options at an economical cost backed by Spyderco's reputation.

When Spyderco seeks out new knife manufacturing vendors, it's never about who makes knives at the lowest price. It's always about finding a manufacturer with genuine knifemaking passion who's talented, open to new ideas and committed to quality. When we initially considered creating an entry-level knife line, Spyderco's owner Sal Glesser went to China. His list of qualified knifemakers was a short one. He met with a few passionate and quality manufacturers that maintained working and manufacturing conditions acceptable, even exemplary, to those here in our own country. What resulted was our byrd line of products made with 8Cr13MoV stainless steel blades. 8Cr13MoV is comparable to what Americans call/designate AUS-8 in its properties and performance. It contains molybdenum and vanadium with approximately .8% carbon content. Molybdenum enhances steel's strength and hardness, Vanadium its wear resistance and toughness. Carbon augments the steel's tensile strength and increases its resistance to wear and abrasion. The resulting recipe created blade steel that retains a sharp cutting edge for extended time and use. The comet shaped opening hole is a byrd knife trademark and is synonymous with the quality requirements, high performance materials and manufacturing standards invested in each knife.

We've designed and manufactured under the premise that:  
"dependability shouldn't depend on your budget".

# byrd™ knife



### BY03BB CARA CARA BLACK

CLOSED	4-3/4"	121mm
OVERALL	8-5/8"	219mm
BLADE	307/8"	98mm
EDGE	3-1/4"	83mm
BLADE STEEL	8Cr13MoV	
WEIGHT	5.9oz.	166g
EDGE TYPES	P,PS	

### BY03 CARA CARA STAINLESS

CLOSED	4-3/4"	121mm
OVERALL	8-5/8"	219mm
BLADE	307/8"	98mm
EDGE	3-1/4"	83mm
BLADE STEEL	8Cr13MoV	
WEIGHT	5.9oz.	166g
EDGE TYPES	P,PS	

### BY03G CARA CARA G-10

CLOSED	4-3/4"	121mm
OVERALL	8-5/8"	219mm
BLADE	3-7/8"	98mm
EDGE	3-1/4"	83mm
BLADE STEEL	8Cr13MoV	
WEIGHT	5.5oz	156g
EDGE TYPES	P,PS	

### BY03BK CARA CARA LIGHTWEIGHT

CLOSED	4-27/32"	123mm
OVERALL	8-11/16"	221mm
BLADE	3-7/8"	98mm
EDGE	3-1/4"	83mm
BLADE STEEL	8Cr13MoV	
WEIGHT	3.8 oz	109g
EDGE TYPES	P,PS	

With just under 4 inches of blade the Cara Cara comes in several handle material options. No inflated price tag, just highly evolved ergonomics, user reliability and innovation.

#### BY03 CARA CARA STAINLESS

Full Stainless Cara Cara has a chamfered pinch-free handle made even lighter with Comet hole contemporary cutouts.

- Right hand tip-up/tip-down clip
- Spine jimping
- David Boye Dent
- Handle can be engraved or embellished
- Hollow-ground blade

#### BY03BB CARA CARA BLACK

Stainless handled Cara Cara with black, non-reflective Carbonitride coated handle and blade.

- Right hand tip-up/tip-down clip
- Spine jimping
- David Boye Dent
- Hollow-ground blade

#### BY03BK CARA CARA LIGHTWEIGHT

Cara Cara Lightweight has an FRN handle molded to stay put in the palm and Comet hole cutouts make it feather light.

- Ambidextrous tip-up/tip-down clip
- Spine and choil jimping
- Skeletonized nested handle liners
- Screw construction
- Phosphor bronze bushings for smooth open/close action
- FRN Bi-Directional® textured handle
- David Boye Dent
- Hollow-ground blade

#### BY03G CARA CARA G-10

The lightweight fiberglass laminate epoxy resin called G-10 found a home in the knife industry as a handle material in the 1980s. Discovered being used in hard-use durable goods like motocross bike frames, safety helmets, even liners for nuclear facilities, it made ideal handle material. G-10 handle resists temperature extremes and sloughs off chemicals, oil and water.

- Ambidextrous tip-up clip
- Spine and choil jimping
- Full length skeletonized dual steel handle liners
- Screw construction
- David Boye Dent
- Hollow-ground blade

**BY04 MEADOWLARK  
STAINLESS**

CLOSED	3-15/16"	100mm
OVERALL	6-7/8"	175mm
BLADE	2-15/16"	75mm
EDGE	2-7/16"	62mm
BLADE STEEL	8Cr13MoV	
WEIGHT	4.1oz	117g
EDGE TYPES	P, PS	

**BY04BK MEADOWLARK  
LIGHTWEIGHT**

CLOSED	4-27/32"	123mm
OVERALL	8-11/16"	221mm
BLADE	3-7/8"	98mm
EDGE	3-1/4"	83mm
BLADE STEEL	8Cr13MoV	
WEIGHT	3.8 oz	109g
EDGE TYPES	P, PS	

**BY04BB MEADOWLARK  
BLACK**

CLOSED	3-15/16"	100mm
OVERALL	6-7/8"	175mm
BLADE	2-15/16"	75mm
EDGE	2-7/16"	62mm
BLADE STEEL	8Cr13MoV	
WEIGHT	4.1oz	117g
EDGE TYPES	P, PS	

**BY04G MEADOWLARK G-10**

CLOSED	3-15/16"	100mm
OVERALL	6-7/8"	175mm
BLADE	2-15/16"	75mm
EDGE	2-7/16"	62mm
BLADE STEEL	8Cr13MoV	
WEIGHT	3.4oz	97g
EDGE TYPES	P, PS	

The Meadowlark is a smaller, just under-3-inch, version of the Cara Cara. Together the two models fill the majority of knife user needs in regard to blade length and size. Blueprinted for ergonomics, efficiency and performance.

**BY04 MEADOWLARK**

Full Stainless Meadowlark has a chamfered handle and weight lessening cutouts.

- Right hand tip-up/tip-down clip
- Spine jimping
- David Boye Dent
- Handle can be engraved or embellished
- Hollow-ground blade

**BY04BB MEADOWLARK  
BLACK**

Stainless handled Meadowlark with black, non-reflective Carbonitride coated handle and blade.

- Right hand tip-up/tip-down clip
- Spine jimping
- David Boye Dent
- Hollow-ground blade

**BY04BK MEADOWLARK  
LIGHTWEIGHT**

- Ambidextrous tip-up/tip-down clip
- Spine and choil jimping
- Skeletonized nested handle liners
- Screw construction
- Phosphor boronze bushings for smooth open/close action
- FRN Bi-Directional® textured handle
- David Boye Dent
- Hollow-ground blade

**BY04G MEADOWLARK G-10**

G-10 epoxy filled woven glass fiber composite offers grip-perfect lightweight strength and rigidity.

- Ambidextrous tip-up clip
- Spine and choil jimping
- Full length skeletonized dual steel handle liners
- Screw construction
- David Boye Dent
- Hollow-ground blade



**BY05 FLIGHT STAINLESS**

CLOSED	4-5/8"	117mm
OVERALL	7-7/8"	200mm
BLADE	3-7/16"	87mm
EDGE	3-3/16"	81mm
BLADE STEEL	8Cr13MoV	
WEIGHT	5.5oz	157g
EDGE TYPES	P, PS	

**BY05G FLIGHT G-10 NEW!**

CLOSED	4-5/8"	117mm
OVERALL	7-7/8"	200mm
BLADE	3-7/16"	87mm
EDGE	3-3/16"	81mm
BLADE STEEL	8Cr13MoV	
WEIGHT	5.5oz	157g
EDGE TYPES	P, PS	

**BY07G CROSSBILL G-10 NEW!**

CLOSED	4-5/8"	117mm
OVERALL	7-5/8"	194mm
BLADE	3-1/2"	89mm
EDGE	3-1/8"	79mm
BLADE STEEL	8Cr13MoV	
WEIGHT	5.5	157g
EDGE TYPES	P, S	

**BY07 CROSSBILL STAINLESS**

CLOSED	4-5/8"	117mm
OVERALL	7-5/8"	194mm
BLADE	3-1/2"	89mm
EDGE	3-1/8"	79mm
BLADE STEEL	8Cr13MoV	
WEIGHT	5.5	157g
EDGE TYPES	P, PS	

**BY05 FLIGHT STAINLESS**

Clip point blades are ground starting at the spine, angling in a downward line. The sharpened edge is ground upward with the two angles meeting near the tip, for tip-centered cutting power. Double finger indents let you choke closer to the cutting edge for responsive control. Hole handle cutouts keep it light and airy.

- Right hand tip-up/tip-down clip
- Weight reducing swedge grind and handle cutouts
- David Boye Dent
- Stainless handle can be embellished
- Hollow-ground blade

**BY05G FLIGHT G-10**

Clip point blade with G-10 laminate handle.

- Ambidextrous tip-up clip
- Spine and choil jimping
- Full length skeletonized dual steel handle liners
- David Boye Dent
- Hollow-ground blade

**BY07 CROSSBILL STAINLESS**

Sharply hooked like raptor's talon, the curve of a Hawkbill blade grasps material when pulling and slicing downward drawing the cutting edge deeper into the material. All stainless construction.

- Right hand tip-up/tip-down clip
- Weight reducing swedge grind and handle cutouts
- David Boye Dent
- Stainless handle can be embellished
- Hollow-ground blade

**BY07G CROSSBILL G-10**

Hawkbill blade with G-10 laminate handle.

- Ambidextrous tip-up clip
- Spine and choil jimping
- Full length skeletonized dual steel handle liners
- David Boye Dent
- Hollow-ground blade



**NEW!**

**BY08 RAVEN  
BY08BK RAVEN BLACK**

CLOSED	4-3/8"	111mm
OVERALL	7-7/8"	200mm
BLADE	3-1/2"	89mm
EDGE	2-7/8"	73mm
BLADE STEEL	8Cr13MoV	
WEIGHT	4.3oz	122g
EDGE TYPES	P, PS	

**BY08G RAVEN G-10**

CLOSED	4-3/8"	111mm
OVERALL	7-7/8"	200mm
BLADE	3-1/2"	89mm
EDGE	2-7/8"	73mm
BLADE STEEL	8Cr13MoV	
WEIGHT	3.3oz	97g
EDGE TYPES	P, PS	

**BY09 CROW  
BY09BK CROW BLACK**

CLOSED	3-7/8"	98mm
OVERALL	6-5/8"	168mm
BLADE	2-13/16"	71mm
EDGE	2-3/16"	56mm
BLADE STEEL	8Cr13MoV	
WEIGHT	3.5oz	100g
EDGE TYPES	P, PS	

**BY09G CROW G-10**

CLOSED	3-7/8"	98mm
OVERALL	6-5/8"	168mm
BLADE	2-13/16"	71mm
EDGE	2-3/16"	56mm
BLADE STEEL	8Cr13MoV	
WEIGHT	2.6oz	74g
EDGE TYPES	P, PS	

**NEW!**

**BY08BK RAVEN BLACK  
BY08 RAVEN**

Modified Clip-point blade has added belly for everyday cutting applications. Lightweight aluminum handle is corrugated with a feather pattern that fuses to the palm whether cutting with a forward or backward motion. Full length steel liners and a Michael Walker LinerLock.

**BY08 Raven**

Silver brushed matte finish blade

**BY08BK Black Raven**

Black Carbonitride non-reflective coated blade

- Right hand tip-up/tip-down clip
- Spine and choil jimping
- Adjustable pivot pin and screw construction
- Hollow-ground blade

**BY08G RAVEN G-10**

G-10 laminate handle Raven

- Right hand tip-up clip
- Spine and choil jimping
- Full length dual, skeletonized steel handle liners
- David Boye Dent
- Hollow-ground blade

**BY09BK CROW BLACK  
BY09 CROW**

Smaller version of the Raven with an under 3 inch blade

**BY09 Silver Crow**

Silver brushed matte finish blade

**BY09BK Black Crow**

Black carbonitride non-reflective coated blade

- Right hand tip-up/tip-down clip
- Spine and choil jimping
- Adjustable pivot pin and screw construction
- Hollow-ground blade

**BY09G CROW G-10**

G-10 laminate handle Crowtion

- Ambidextrous tip-up clip
- Spine and choil jimping
- Full length dual skeletonized steel handle liners
- David Boye Dent
- Hollow-ground blade

BY10 ROBIN

CLOSED	3-5/16"	84mm
OVERALL	5-13/16"	148mm
BLADE	2-1/2"	64mm
EDGE	1-7/8"	48mm
BLADE STEEL	8Cr13MoV	
WEIGHT	3.1oz	88g
EDGE TYPES	P, S	

BY11BK FINCH  
LIGHTWEIGHT

CLOSED	2-9/16"	65mm
OVERALL	4-7/16"	113mm
BLADE	1-7/8"	48mm
EDGE	1-1/2"	38mm
BLADE STEEL	8Cr13MoV	
WEIGHT	0.6oz	17g
EDGE TYPES	P, S	

BY12 STARLING

CLOSED	2-7/16"	62mm
OVERALL	4-3/8"	111mm
BLADE	1-15/16"	49mm
EDGE	1-3/4"	44mm
BLADE STEEL	8Cr13MoV	
WEIGHT	0.65oz	18g
EDGE TYPES	P	

BY10BK ROBIN  
LIGHTWEIGHT

CLOSED	3-5/16"	84mm
OVERALL	5-13/16"	148mm
BLADE	2-1/2"	64mm
EDGE	1-7/8"	48mm
BLADE STEEL	8Cr13MoV	
WEIGHT	2.2oz	61g
EDGE TYPES	P, S	

BY10G  
ROBIN G-10

CLOSED	3-5/16"	84mm
OVERALL	5-13/16"	148mm
BLADE	2-1/2"	64mm
EDGE	1-7/8"	48mm
BLADE STEEL	8Cr13MoV	
WEIGHT	2.5oz	72g
EDGE TYPES	P, S	

BY11 FINCH

CLOSED	2-1/2"	84mm
OVERALL	4-3/8"	111mm
BLADE	1-7/8"	48mm
EDGE	1-9/16"	40mm
BLADE STEEL	8Cr13MoV	
WEIGHT	1.2oz	34g
EDGE TYPES	P, S	

BY10BK ROBIN  
LIGHTWEIGHT

The intermediately sized Robin mysteriously finds its way into your pocket from the weekday boardroom to riding the board on the weekend. Because it carries easily and cuts anything, we offer three handle material options suiting your preference and needs. All handles are ergonomically built with chamfered no-pinch sides, textured spine and choil jimping and the Comet Shaped Hole for one hand opening.

- Ambidextrous tip-up/tip-down clip
- Spine and choil jimping
- Skeletonized nested handle liners
- Screw construction
- Phosphor bronze bushings for smooth open/close action
- FRN Bi-Directional® textured handle
- David Boye Dent
- Hollow-ground blade

BY10 ROBIN

Stainless steel handle Robin

- Right hand tip-up/tip-down clip
- Spine jimping
- David Boye Dent
- Hollow-ground blade

BY10G ROBIN G-10

G-10 laminate handle Robin

- Ambidextrous tip-up clip
- Spine and choil jimping
- Full length dual skeletonized steel handle liners
- Screw construction
- David Boye Dent
- Hollow-ground blade

BY11 FINCH

Finches are light, fast and resilient.

Per inch they yield more maximum cutting performance in the smallest available folder. Mid-positioned back lock and spine and choil jimping make it simple to open, use and close.

- Clipless
- David Boye Dent
- Enlarged Comet Shape Opening hole
- Ball/clasp chain for purse, pocket or pack attachment
- Weight lessening handle cutouts
- Engravable handle
- Hollow-ground blade

BY11BK FINCH  
LIGHTWEIGHT

FRN Finch with feathered textured handle

- Clipless
- David Boye Dent
- Enlarged Comet Shape Opening hole
- Ball/clasp chain for purse, pocket or pack attachment
- Weight lessening handle cutouts
- FRN handle
- Hollow-ground blade

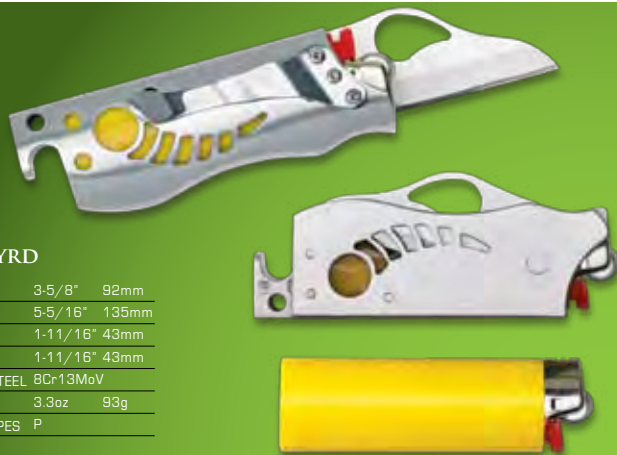
BY12 STARLING

Sleek and compact the Starling works in everyone's hand big or small. Wrap your hand around it and spine jimping creates tactile resistance when cutting. Streamlined and thinner than the Finch.

- Clipless
- David Boye Dent
- Ball/clasp chain for purse, pocket or pack attachment
- FRN feather textured handle
- Hollow-ground blade

**BY14  
FIREBYRD**

CLOSED	3-5/8"	92mm
OVERALL	5-5/16"	135mm
BLADE	1-11/16"	43mm
EDGE	1-11/16"	43mm
BLADE STEEL	8Cr13MoV	
WEIGHT	3.3oz	93g
EDGE TYPES	P	



**BY16 FLATBYRD**

CLOSED	3-5/16"	84mm
OVERALL	5-13/16"	148mm
BLADE	2-1/2"	64mm
EDGE	1-7/8"	48mm
BLADE STEEL	8Cr13MoV	
WEIGHT	2.5oz	72g
EDGE TYPES	P, PS	



**BY15  
BYRDRENCH**

CLOSED	4-22/26"	119mm
OVERALL	7"	178mm
BLADE	2-1/2"	64mm
EDGE	2-3/16"	56mm
BLADE STEEL	8Cr13MoV	
WEIGHT	8 oz.	228g
EDGE TYPES	P	



**BY13  
8-TOOL HARP**

CLOSED	3-3/4"	95mm
OVERALL	6-9/16"	167mm
BLADE	N/A	
EDGE	N/A	
BLADE STEEL	N/A	
WEIGHT	4.5oz	128g
EDGE TYPES	N/A	



**BY14 FIREBYRD**

Three tools are requisite gear if you're camping, backpacking, or lighting a fire: A sharp reliable blade, a lighter and bottle cap opener. Bring out the Firebyrd. Grab a seat. Open a beverage. Fire up. Notch-joint (non-locking) drop-point blade opens/closes with a single hand. Aluminum handle encases a standard sized lighter.

- Right hand tip-down clip
- Lanyard Hole
- Hollow-ground blade
- Lighter not included

**BY16 FLATBYRD**

It's not road kill. The Flatbyrd is a pancake-flat folder so slim it slides in a back pocket skinnier than your wallet before payday. Pinch-free contoured aluminum handle has the locking device integrated into the back scale. Unlock the blade by pressing the lever release located inside the largest handle hole. No pocket clip, carries flat in a pocket, purse, even tucked in a boot.

- Clipless
- Spine & choil jimping
- Aluminum handle
- Frame Lock
- Phosphor bronze bushings for smooth open/close action
- Flat-Sabre grind blade
- Designed by the late Israeli custom knifemaker Eduard Bradichansky

**BY13 8-TOOL HARP**

Harp Tools first appeared in the UK in the 1880s. Called so because they're shaped like the musical instrument, they contained the implements needed by specialized tradesmen (farriers, bricklayers, longshoremen). Ours has eight functionally generic tools. Each rotates out independently and snaps open. Phillips-head screwdriver, slotted-head screw driver, saw, corkscrew, file punch/awl, gimlet and a small/large-head hammer with a bottle lid lifter. Tools fold flat into the outer ring. Carries flat in a leather belt case.

**BY15 BYRDRENCH**

The byrdRench was designed by a aerospace engineer in league with Spyderco R&D. Full-sized locking knife blade opens/closes with one-hand. Whether you're a hang-it-on-a-belt-loop or a clip-in-the-pocket person you're covered with a pocket clip

and nylon pouch. The tool's body consists of two stainless halves connected with a pivot, creating a slip joint plier (large and small bite) on one end and an adjustable 9/16" wrench on the opposite end. Housed inside are four screwdriver bits: #2 and #3 Phillips-head and #1 and #2 flat-head. Customize your bit arsenal as the housing accepts any standard sized bit including Allen and Torx®. Rough file-combination-hole-starter slides into a spring, sitting above the bits. The pivot connecting the two halves rotates open locking into a full-length tool easy to grip and long enough to torque with a magnetized screwdriver and a wrench. Releasing the pivot separates the screwdriver/knife side of the tool from the crescent wrench, allowing you to use the wrench and the screwdriver/knife independently and/or simultaneously. Multitools transformed.



**BY17 CARA CARA RESCUE**

CLOSED	4-27/32"	123mm
OVERALL	8-3/4"	222mm
BLADE	4"	100mm
EDGE	3-3/8"	86mm
BLADE STEEL	8Cr13MoV	
WEIGHT	3.7oz	104g
EDGE TYPES	P, PS, S	

**BY19 MEADOWLARK RESCUE**

CLOSED	4-1/32"	102mm
OVERALL	7-1/8"	181mm
BLADE	3-1/8"	79mm
EDGE	2-9/16"	65mm
BLADE STEEL	8Cr13MoV	
WEIGHT	2.6oz	74g
EDGE TYPES	P, PS, S	

**BY17 CARA CARA RESCUE**

Large round-tipped Sheepfoot blade with lightweight handle for safety cutting performance and reliability.

- Spine & choil jimping
- Screw construction
- Phosphor bronze bushings for smooth open/close action
- FRN Bi-Directional Textured handle
- David Boye Dent
- Hollow-ground Sheepfoot blade

**BY19 MEADOWLARK RESCUE**

Smaller version of the Cara Cara Rescue

- Spine & choil jimping
- Screw construction
- Phosphor bronze bushings for smooth open/close action
- FRN Bi-Directional Textured handle
- David Boye Dent
- Hollow-ground Sheepfoot blade



**NEW!** **BY18 CATBYRD**

CLOSED	4-1/2"	114mm
OVERALL	8"	203mm
BLADE	3-9/16"	90mm
EDGE	3-5/32"	80mm
BLADE STEEL	8Cr13MoV	
WEIGHT	5.4oz	154g
EDGE TYPES	P, PS	

**BY20 WINGS** **NEW!**

CLOSED	4-3/4"	121mm
OVERALL	8"	203mm
BLADE	SpyderEdge 3-3/8"	86mm
	PlainEdge 3-5/16"	84mm
EDGE	SpyderEdge 3"	76mm
	PlainEdge 2-7/8"	73mm
BLADE STEEL	8Cr13MoV	
WEIGHT	5.4oz	152g
EDGE TYPES	Clip Point P Sheepfoot S	

Production Prototype Pictured

Production Prototype Pictured

**BY18 CATBYRD**

Here kitty. All feline, sleek, clean-lined and sharp clawed. Blade sweeps upward to a Clip-Point tip with spine swedge. Integral Lock inspired by knifemaker Chris Reeve uses the back-side of the handle as the LinerLock's liner, creating a strong locking system with fewer moving parts to wear and loosen over time. Handle face is inlayed with Yin & Yang grip tape patches laying down a non-skid sand-papery surface.

- Right hand tip-up clip
- Spine and choil jimping
- Adjustable pivot
- Flat-ground blade

**BY20 WINGS**

They say a bird in hand is better than two in the bush. This byrd in hand is two blades in a single handle. Sheepfoot blade is fully serrated, the Clip-point blade is all PlainEdged. Blades lock and unlock independently with a side-by-side LinerLock. G-10 laminate handle.

- 4-way clip: Tip-up/down, left/right hand
- Screw together construction
- Skeletonized
- Phosphor bronze bushings for smooth open/close action
- Hollow-ground blades
- Includes a nylon belt-carry sheath

**BY200 DUCKFOOT**

OVERALL	7"	177mm
STEEL	Steel frame nickel plated coated with 600 mesh diamond	
WEIGHT	5.1oz	145g



**NEW!**

**TSBL BYRD T-SHIRT**

6.1 oz pre shrunk  
100% cotton.  
Doubled stitched neck, sleeve and bottom hem.  
Dino Evolution art.  
Mountain lake blue  
S-M-L-XL-XXL.



**NEW!**



**HATBL BYRD HAT**

Stylized Military cap with byrd logo.  
U.S.A. made navy blue—one size fits all.

**BY200 DUCKFOOT**

The Duckfoot has different shapes and edges totaling over 15 square inches of diamond coated sharpening surface. Steel form construction is nickel plated, bonding 600 mesh mono-crystalline diamonds to the steel. Angles and sides include: 1"X5" flat diamond stone, 3-grooves: one wide-radius channel for deburring, a medium and a narrow radius channels are for honing pointed tools. Hold the foot vertically on a tabletop, and it tilts from side to side raising one edge off the table creating a 20° angle (40°

total angle) for knife blades. The sides are elliptically shaped with a large radius for PlainEdges and a smaller radius for SpyderEdges (serrations). Set on its' side horizontally, it creates a 12.5° scissor sharpening angle. Packaged in a suede carry case that doubles as a non-skid counter top pad for use while sharpening. Instruction DVD included. \* The diamond particles do not require pressing hard when sharpening. Pressing hard will dislodge the particles, gentle pressure does it.

**BYRD KNIFE LIMITED WARRANTY**

**RELEASE, ASSUMPTION OF RISK, WAIVER OF LIABILITY & INDEMNITY AGREEMENT.**

By purchasing any item produced or imported by Spyderco Inc, the buyer assumes responsibility to ascertain and follow all applicable federal, state, local and international laws in having, owning carrying, shipment of, and using any Spyderco product. The buyer expressly agrees to indemnify and hold harmless Spyderco Inc. for all claims resulting directly or indirectly from the purchase, ownership or use of the item in violation of applicable federal, state and local laws or regulations. Spyderco/ byrd are not liable for misuse of any knife or product purchased either directly from Spyderco or from a dealer/

distributor. You must be 18 years of age to purchase Spyderco/byrd knives. This warranty gives you specific legal rights and you may also have other rights, which vary from state to state.

**\*Information included in this catalog is subject to change without notice. Modification of products, materials, measurements, technical specifications and availability can occur. Contact your local Spyderco dealer for information.**

www.byrdknife.com  
Phone: 800-525-7770  
Local: 303-279-8383  
Fax: 303-278-2229

byrd knife  
820 Spyderco Way  
Golden, Colorado 80403  
U.S.A.

**ABS**

A black amorphous thermoplastic polymer with high impact strength.

**Almite**

A coating used on aluminum handles similar to anodizing. Resistant to scratching and marring, it can also be tinted to any color for visual appeal.

**Alumina Ceramic**

The compound used for Spyderco sharpening stones. It is a ceramic-bonding agent mixed with alumina particles (synthetic sapphires), shaped, then kiln fired at temperatures in excess of 3000 degrees F.

**Ambidextrous**

Using both hands with equal ease. Pertaining to knives, it is a knife that is not solely designed for a left- or right-handed person but can be used with equal ease by both hands.

**Balisong/ Butterfly**

A knife design believed to have originated in the UK, brought to the Philippines by English sailors, and was adopted and popularized in the Philippines. Often used in Filipino martial arts. The knife has two separate handle sections that rotate round the blade's pivots to create a handle and then rotate back covering and protecting the blade when closed.

**Bolster**

A piece of metal, generally nickel silver or stainless steel, that is located at one or both ends of a folding knife handle.

**Boltaron**

A recycled ABS/ acrylic PVS extruded alloy sheet material used for making sheaths. It has excellent impact strength and abrasion, chemical, and fire resistance properties.

**Caping**

A term to describe the careful and detailed cutting and removing of the hide from a game animal for the purpose of taxidermy. More precisely it refers to removing the skin from the head, shoulders and neck.

**Carbide**

A hard, sharp carbon/iron material used where a very hard material is needed such as in machining or drilling steel. Spyderco uses carbide to make the glass-breaking tip found on the C79 Assist model.

**Center Line Grind**

A grind down the center of a blade equally dividing it into halves. On the SpyderFly only the bottom edge is sharpened and the top of the dagger grind is left unsharpened creating a false edge.

**Choi**

A choil is a round cut out separating the cutting edge from the ricasso. It is also used to describe a cut out, molded or formed area where the handle and blade meet which positions/ guards the index finger while gripping the opened knife.

**Choi Jimping**

Small serrations or texturing located on the choil of a knife's handle where the hand grips. Jimping creates tactile resistance, adds purchase, traction and slip-resistance.

**CLIPIT**

Spyderco's trademarked term for their line of folding knives which feature a pocket clip.

A CLIPIT fan is often called a CLIPITEER.

**Cobra Hood™**

A machined flange of steel positioned over the Spyderco round opening hole on the spine of the blade which directs/ positions your thumb over the hole for quickly opening the knife blade. See Spyderco C79 Assist.

**Cordura**

Cordura® is a certified fabric from INVISTA. It is used in a wide range of products from luggage and backpacks to boots, to military wear and performance apparel. It is long lasting, resistant to abrasions, tears and scuffs. Spyderco utilizes this product on our SpyderPacs.

**David Boye Dent**

Custom knifemaker David Boye removed a small arc or dent of metal from the lock bar lever of his knives. This removed piece lessened the possibility of gripping the handle hard enough to depress the lock and accidentally unlock the blade while using the knife.

**Detent**

A minute divot or dimple machined into the blade tang. A ball bearing drops into the detent hole when the knife is in the closed position, holding the knife blade closed inside the handle.

**Diamond Coating**

The mechanical entrapment of diamond crystals into a metal substrate. This process operates by depositing metal, layer by layer, from a plating solution until enough metal is built up around the diamond crystals to hold them in place.

**DLC Coating**

DLC [Diamond like carbon] is combined diamond (AP3) and graphite (SP2) used for coating blades and parts.

**Double Flat-ground**

A blade that is ground flat on both sides of the blade, tapering to an edge with no radius.

**EDC**

An acronym for Everyday Carry meaning a knife that is carried and used daily.

**ELU**

Acronym for "end-line user", the consumer who uses Spyderco knives and sharpeners.

**Embellishment**

Term used to describe personalized engraving or additional ornamentation added to a knife after it is manufactured.

**EMT**

Acronym for Emergency Medical Technician

**Ergonomics**

The applied science of equipment design intended to maximize productivity by reducing operator fatigue, safety and discomfort. Knives which are designed to be comfortable and less fatiguing to use are labeled "ergonomic."

**Finger Choi**

A purposeful and specific area/curve cut out between the blade and handle. It creates a grip position point closer to the cutting edge for better control while cutting.

**Handguard**

Protrusion/expansion on the knife's handle proximal to the blade keeping the hand safely positioned on the handle inhibiting sliding forward.

**Hawkbill Blade**

Blade shaped in a sharply curved hook like the talon of a raptor. The inside edge of the blade is sharpened and works particularly well for commercial fishermen who reach out and pull toward them while cutting line, webbing and netting.

**High Alumina Ceramic**

The compound used for Spyderco sharpening stones. It's a ceramic-bonding agent mixed with alumina particles (synthetic sapphires), shaped then kiln fired at temperatures in excess of 3000 degrees F.

**Integral Pocket Clip**

Pocket clip that is molded as part of (integral to) the handle rather than a separate component attached with screws. Found on Spyderco model C28PBK Dragonfly.

**Kick**

The unsharpened portion along the underside of the knife blade where the edge begins. Keeps the blade "kicked out" so the edge does not hit the back spacer.

**Kraton**

A rubbery thermoplastic polymer used as a flexible inlay on knife handles for enhanced grip.

**Kydex**

A thin thermoplastic commonly used for firearm holsters and knife sheaths. It is flexible, resistant to sweat, chemicals, oils and solvents. It is shaped by heat and retains its' set form.

**Lanyard Hole**

A hole placed in the end of a knife handle. Originally used by sailors who would place a cord through such a hole in their knife to keep from losing it overboard.

**Left/Right Hand Carry**

Knife clip that is manufactured to affix ambidextrously to either side of the knife positioning the folder for use by left- and right-handed people.

**LEO**

Acronym for Law Enforcement Officer

**Little Big Knife**

Term coined by Spyderco to describe a small bladed knife (generally under three inches) that is manufactured using features and materials that allow the knife to be used for strenuous or hard cutting normally done with larger, heavier tools.

**Nesting**

Hollowing out a section in G-10 or other handle material on the inside of the handle where the lock and/or liner is then inset/ inlaid and fitted into the hollow section. Nesting increases strength and creates a thinner overall profile to the knife.

**Peel-Ply Carbon Fiber**

A carbon fiber filled, epoxy resin lay-up that has textured material placed on the surface to protect the material during manufacturing. After manufacture the material is removed and it leaves a grippy texture in the epoxy making a non-slip handle material.

**Phosphor Bronze Bushings**

The washer between the scale or the liners, and the blade, made of phosphor bronze.

It acts like a liquid lubricant would, making open/close action smooth.

**Pommel**

The knob or expansion found on the end of a sword or knife.

**Quillion**

A handguard protruding from both sides of the handle (where the handle and blade meet), which stops the hand from slipping up onto the blade.

**SAS**

Acronym for Save and Serve referring to military personnel, law enforcement, fire/rescue and emergency response professionals.

**Scale**

A knife handle made of scales or slabs of material that are riveted, screwed or bonded together.

**Skeletonized Liners**

Internal steel handle liners that have been hollowed out (skeletonized). In removing sections of steel, bulk and weight is lessened while allowing the liner to maintain its strength and rigidity.

**Slip Joint**

Non Locking Blade – a blade having a spring acting against it, which provides some resistance to its opening and closing as it pivots within the handle.

**Spine Cusp**

A point or crest above The Spyderco Round Hole that creates a spot where the thumb is placed and offers leverage while holding the knife and cutting.

**Spine Jimping**

Small serrations or texturing located on the spine of a blade where the hand or finger grips. Jimping creates tactile resistance, adds purchase, traction and slip-resistance.

**Sprint Run**

A limited, one time only, production of a knife design/model. Production numbers are less than 1500 pieces.

**Spyderco Trademark Round Hole™**

Round hole located in the knife blade.

**Tang**

The portion of the blade where it connects to the handle.

**Tip-Up/ Tip-Down**

Refers to which direction the folded knife is positioned by its pocket clip. When closed and clipped in a pocket, whichever direction (up or down) the blade's tip sits defines if it is termed tip-up or tip-down.

**Titanium**

A non-ferrous metal with high tensile strength is lightweight and resistant to corrosion. Often used for handle material or knife liners.

**Wave (Emerson Wave)**

Blade opening device invented and patented by Mr. Ernest Emerson of Emerson Knives. It is a hook protruding from the blade's spine that catches the edge of the pant's pocket when drawing out –down - and back, opening the blade as you deploy the folder. Licensed from Ernest Emerson, Pat. 5,878,500.

## BLADE SHAPES

**Assist Blade** [Patented blunt tip] Hollow ground blade with a blunt tip designed to prevent accidental puncturing or poking. Designed for cutting webbing, rope, seatbelts or clothing.

**Bowie Shaped Blade** Blade with an upswept curving tip that can be (or not) double-edged near the point. Named after Colonel James Bowie who made the shape famous in the 19th century American West.

**Drop Point Blade** A design popularized by the hunting knives made by Bob Loveless and Bo Randall. The tip of the blade is lowered through a convex arc from the spine.

**Hawkbill Blade** A sharply curved blade with a sharpened inside edge. Designed for cutting while reaching out and pulling downward, it is commonly used by commercial fishermen for cutting line, webbing and netting.

**Jimping** Small serrations or texturing found on a blade's spine and/or in a finger choil where the thumb and/or fingers grip the knife. It creates tactile resistance and improves grip traction.

**Leaf Shaped Blade** A blade shape Spyderco has been developing and refining since the mid-1990s. It has a more distinct point than a spear point blade.

**Modified Clip Point Blade** A blade ground on the top (spine) in an angled or sweeping line downward. The underside (where the sharpened edge is located) is ground upward. The two angles meet at the tip determining the depth of the blade's belly.

**Reverse "S" Blade** Blade shape resembling a backward S with the tip curving downward. The thickest part of the blade (the belly) curves in the same direction as the tip.

**Sheepfoot Blade** A blade with a round blunt tip without a traditional point. Being rounded lessens the chance of accidental puncturing around livestock, inflatable watercraft and during emergency cutting.

**Spear Point Blade** Blade shaped with an equal amount of curve on the spine and the cutting edge with a distinct separating grind line. The two curves meet, coming together at the point.

**Waved Blade** A blade opening feature invented and patented by Ernest Emerson. It is a hook protruding from the blade's spine that opens the knife's blade when drawing it from a pocket by catching on the pocket's edge.

**Wharncliffe Blade** A blade in which the point of the knife drops downward from the spine meeting a straight cutting edge at the blade's tip.



## HANDLE (SCALE) MATERIALS

**Almite** A coating used on aluminum handles, similar to anodizing. It resists scratching and marring and can be tinted to any color.

**Anodized Aluminum** Subjecting aluminum to electrolytic action, coating the aluminum with a protective and decorative film.

**Carbon Fiber** Graphite fibers (the size of a human hair) woven together then fused with epoxy resin. Lightweight with a high level of tensile strength it is three dimensional in appearance and costly to manufacture.

**FRN (Fiberglass Reinforced Nylon)** A nylon polymer mixed with glass fiber then injection molded into formed and textured lightweight high-strength knife handles.

**Bi-Directional Texturing** Patented texture pattern molded into FRN handles with forward and backward graduating steps radiating outward from the center of the handle. It provides resistance to slipping in the hand.

**Volcano Grip** Our trademarked waffle texture found on several of our FRN handled knife models. It is a continuous pattern of small squares providing tactile resistance to slipping while gripped in the hand.

**G-10** An epoxy filled woven glass fiber that is rigid, impervious to temperature changes and chemicals and can be tinted into different colors.

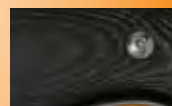
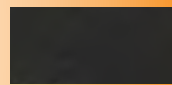
**Kraton** A rubbery thermoplastic polymer used as flexible inlays on knife handles enhancing grip.

**Micarta** Composite of linen or paper fabric that is impregnated with epoxy resin then formed into lightweight, durable and visually appealing handles. It can be polished or bead blasted to change its appearance and texture.

**Natural Materials** Natural materials such as jigged bone, leather, mother of pearl, abalone, stabilized woods and stone that are used in making and embellishing handles.

**Stainless Steel** Steel containing a minimum of 12.5% chromium, making the steel resistant (not stain proof) to corrosion. The chromium oxide (CrO) creates a barrier to oxygen and moisture inhibiting rust formation.

**Titanium** A non-ferrous metal used in knife manufacturing for its high tensile strength, light weight and corrosion resistance. Often used for clips (Salt Series), handles and liners.



## EDGE GRINDS

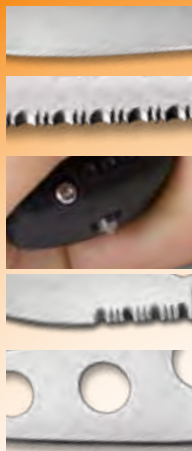
**PlainEdge** A sharpened knife blade with no serrations or teeth sometimes referred to as a "smooth blade".

**SpyderEdge** Spyderco's two-step serration patterns consisting of one large and two small serrations. The pattern increases the cutting edge's surface area by up to 24%.

**Carbide Tip:** A hard sharp carbon/iron bonded material found in machining or drilling steel. Spyderco uses carbide for the replaceable and retractable glass breaking tip found on the C79 Assist model.

**CombinationEdge** A blade that is partially PlainEdge and partially SpyderEdge at the cutting edge.

**Trainer** A non-sharpened blade that is identical in weight and proportion to its live counterpart and used for training and practice purposes. Spyderco trainers are red handled denoting they are non-sharpened.



## SPYDERCO LOCKING MECHANISMS

**Back Lock** Locking system positioned on the spine of the handle that uses a rocker arm which pivots in the center. A protrusion on one end of the arm connects with a notch on the blade's tang locking the blade open.

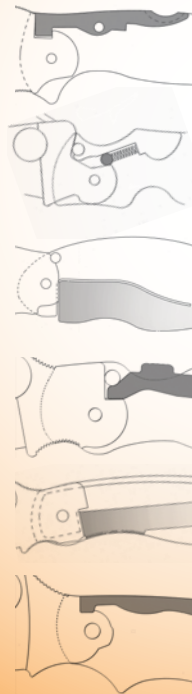
**Ball Bearing Lock** A patented compressive lock, wedging a stainless steel ball bearing between a fixed anvil and the blade tang. The ball is also utilized to detent the blade into the closed position.

**Chris Reeve Style Integral Lock** Developed by custom knifemaker Chris Reeve using the original Walker LinerLock in an integral form. It functions like a traditional LinerLock with the lock's liner comprised from part of the handle scale.

**Compression Lock** A small piece of metal that is inserted, from the side, in between the blade tang and the stop pin (or anvil pin)

**Walker LinerLock** Locking system developed by customer knifemaker Michael Walker. The blade is locked open by a leaf-like spring that comes in from the side, butting up against the tang of the blade.

**Notch Joint** A non-locking blade held open by a spring acting against it, providing resistance to its' opening and closing as it pivots within the handle.



## GRINDS

**Flat Saber Grind (Scandi)** An edge ground completely flat without a radius that tapers from the cutting edge to a grind line down the center of the blade.

**Full Flat Grind** A flat grind, leaving a completely flat surface ground from the blade's edge all the way to its' spine.



**Hamaguri** Also called an Appleseed or Moran grind. It's a convex grind made on a slacked belt sander.

**Hollow Grind** A thin or shallow edge that is ground with a radius, leaving a concave shape above the cutting surface.

**Single Bevel Grind** Also called a chisel grind. The edge is flat or hollow ground but on only one side.

**Spine Swedge** Also called a false edge, it's an edge on the back of the blade's spine that is chamfered or non-sharpened. The swedge removes weight from the blade adding balance and penetration performance.

**Zero Grind** Similar to a full-flat grind but without the secondary grind for the edge. The edge is the same grind as the primary creating a single flat side.

**Zero Grind Saber (Scandi)** Similar to a flat ground saber (Scandi) but without a secondary grind for the edge. The edge is the same grind as the primary grind.



## BLADE COATINGS

**Black Electric Plating** A non-reflective coating adhered to steel using an electrostatic process. It eliminates the steel's reflective quality.

**DLC** (Diamond Like Carbon coating) is combined diamond (AP3) and graphite (SP2) used for coating blades and parts.

**Titanium Carbonitride Coating** A ceramic film coating that is hard (92Rc) less than 3 microns thick. It provides high abrasion resistance and low friction coefficient.

## CLIPS

**Integral Pocket Clip** Pocket clip molded as part of (integral to) the handle rather than a separate component attached with screws. Found on Spyderco's C28BK Dragonfly Lightweight

**Metal Clip** The most commonly used clip on Spyderco knives. They can be stainless steel or titanium and vary, including chrome or black plated clips, with or without holes, in several shapes and sizes. Our metal clips attach to the knife's handle in a triangle pattern with barrel bolts or three-screws. Most adjust to customize carry positions and vary on different models.

**Wire Clip** A heat treated wire held in place on the scale by a screw or barrel bolt. Some wire clips are designed to carry deep in a pocket, some have a higher profile, positioning the knife higher and closer to the pocket's edge.

**Shackle Clip** A spring-loaded barrel clip with a release pin positioned near the Spyderco Round Hole letting you unhook and open the folder in one motion without needing to rotate the knife in hand. It snaps through a loop for attachment to a PFD, spray skirt, harness, buoyancy equipment or carabineer. Found on the C30BK2 Remote Release2.



**CARBON (C)** Increases edge retention and raises tensile strength. Increases hardness and improves resistance to wear and abrasion.

**CHROMIUM (Cr)** Increases hardenability, tensile strength and toughness. Provides wear and corrosion resistance. Above 12% it yields what is generally acknowledged as stainless steel.

**COBALT (Co)** Increases strength and hardness, and permits quenching in higher temperatures. Intensifies the individual effects of other elements in more complex steels.

**COPPER (Cu)** Increases corrosion resistance.

**MANGANESE (Mn)** Increases hardenability, wear resistance and tensile strength. Deoxidizes and degasifies to remove oxygen from molten metal. In larger quantities, increases hardness and brittleness.

**MOLYBDENUM (Mo)** Increases strength, hardenability and toughness of steel. Improves machinability and resistance to corrosion. Prevents high temperature creep. Helps retain fine grain size and is an effective substitute for tungsten in many high-speed tool steels.

**NICKEL (Ni)** Adds strength and toughness

**NITROGEN (N)** Used in place of carbon for the steel matrix. The nitrogen atom will function in a similar manner to the carbon atom but offers unusual advantages in corrosion resistance.

**PHOSPHORUS (P)** Improves strength, machinability and hardness. Creates brittleness in high concentration.

**SILICON (Si)** Increases strength. Deoxidizes and degasifies to remove oxygen from molten metal.

**SULFUR (S)** Improves machinability when added in minute quantities, but can decrease toughness.

**TUNGSTEN (W)** Adds strength, toughness and improves hardenability.

**VANADIUM (V)** Increases strength, wear resistance and increases toughness. Limits grain size.

The purpose of this guide is to provide a detailed look into Steel. The world of Steel is as fluid as molten metal. It is ever-evolving.

Steel as a matter of opinion is very subjective as it relates to knives and knife knuts. There is no clear cut answer as to which is the best steel. We have different requirements and preferences.

Our hope, is this guide will help you understand the world of steel a bit better and perhaps assist you in better defining what your own preferences are and why.

A word of caution, this information is not intended to be all-inclusive, nor could it ever be.

We at Spyderco, just like all other people, gravitate towards superior products. We are committed to using the best materials available at the time. As the world of steel evolves, so do our products. There are over 3000 different types of steel, each having its own positive and negative attributes. In order to determine your own preferences, it is perhaps best to first understand the history of steel and how it is made.

Although an exact date of discovery is not known, man has been forging steel for as long as he's been working iron. Ironworkers learned to make steel

by heating wrought iron and charcoal (a source of carbon) in clay boxes for a period of several days. By this process the iron absorbed enough carbon to become a true steel.

IRON by itself is a relatively soft metal, it does not hold a good edge. However, if you add Carbon it hardens the iron, making steel. Steel has proven to be ideal for making edged weapons.

At a very simplified level, making steel is like baking a cake. You follow a precise recipe to achieve the type of cake (steel) that you desire. You begin with flour (iron) and from there you add various ingredients (elements). These additional ingredients will determine what type of cake (steel) you end up with. Once you have added all of the additional ingredients (elements) you are left with a batter that is ready to bake (heat treat). Baking (heat treating) is just as much a part of the "recipe" as the ingredients (elements). If not done properly, several properties can suffer. Once baked, you have a new - completely different - finished product. Your cake will forever be a cake, it can never go back to being batter. Of course steel can be re-melted to a molten state, but that simply is the beginning of becoming a new type of steel.

Steel is an alloy of iron and carbon; just as bronze is an alloy of copper and tin. Historically, steels have been prepared by mixing the molten materials. Alloying elements are melted and dissolved into molten iron to make a steel. The molten steel is cast into an ingot, which is then rolled out (while it is still hot) and shaped much like you would roll out cookie dough. As the steel begins to slowly cool below the critical temperature, things start to happen inside the steel. At these elevated temperatures, alloying elements are able to move around in the steel, or diffuse. Different elements diffuse at different rates, (typically the larger the atom, the slower it diffuses). If the alloying contents are too high for some elements to assimilate with, the excess will separate or segregate out of the steel and form inclusions or possibly combine with another element to form large undesirable carbides. These diffusional processes are also controlled by the austenite grain size of the steel - grains are little packets of specifically oriented crystals. Grain boundaries act as barriers to diffusion, the smaller the grains, the more boundaries, and the slower the steel. This limits the performance capabilities of the steel both in corrosion resistance, and in wear resistant carbide formation.

More recently, Powder Metallurgy has become the chosen method of preparation. The difference in the processing of a powdered metal allows for steel chemistries not possible with traditional steel-making practices. The process starts out the same as wrought steels - alloying elements are added and dissolved into molten iron. Then comes the main difference. The molten steel is atomized (mistled into microscopic droplets) into liquid nitrogen where the steel is instantly frozen, leaving no time for diffusional processes. The chemistry of the resulting powder is identical to that in the molten vat. Additionally, there are no inclusions or large carbides that form. The austenite grain size is the size of the powder at the very largest, which is small. The powder is then cleaned and sorted by size and then the remaining ideal powder is sintered in a hot isostatic press to solidify the steel. Sintering is heating the steel to a temperature just below its melting point, and then pressing it together at high pressures to solidify or remove the voids between powder spheres. This

allows for drastic changes in the steel chemistry namely in carbon and vanadium. A larger volume of the highly wear resistant vanadium carbides form upon heat-treating. Since Vanadium has a greater propensity to interact with carbon and form carbides than it does with Chromium, most of the excess carbon is utilized in the formation of vanadium carbides. These leave the Chromium free to help keep the steel corrosion resistant. The result is a premium steel product with properties of exceptional wear-resistance and good corrosion-resistance.

Heat treating the steel to its critical temperature allows the carbon atoms to enter into the crystalline molecules of the iron which have expanded due to the heating. Quenching the steel at this point causes the molecules to contract, trapping the carbon atoms inside.

More specifically, the process of hardening steel by heat treatment consists of heating steel to a temperature at which austenite is formed. Austenite has the property of dissolving all the free carbon present in the steel. Quenching is then used to "freeze" the austenite changing it to martensite. These treatments set up large internal strains in the steel; these are relieved by tempering (further heating the steel at lower temperatures). Tempering the steel decreases the hardness, strength and brittleness. It however, increases the ductility and toughness.

Steels are classified accordingly with the elements used in production. These classifications are, Carbon Steels, Alloy Steels, High-Strength Low-Alloy Steels, Stainless Steels, Tool Steels and Exotic Steels (non steel).

**CARBON STEELS** contain varying amounts of carbon and not more than 1.65% of manganese and .60% of copper. There are 3 types of Carbon Steels, Low (.3% or less), Medium (.4-.8%) and High (.9% and up). High carbon is commonly used for knives.

**ALLOY STEELS** have a specified composition, containing certain percentages of vanadium, molybdenum, or other elements, as well as larger amounts of manganese, silicon, and copper than do regular carbon steels.

**HIGH-STRENGTH LOW-ALLOY STEELS** known as HSLA steels are relatively new. They cost less than do regular Alloy Steels because they contain only small amounts of the expensive alloying elements. They have been specially processed, however, to have much more strength than Carbon Steels of the same weight.

**STAINLESS STEELS** contain a minimum of 12% Chromium. The Chromium provides a much higher degree of rust resistance than Carbon Steels. Various sources site differing minimum amounts of Chromium required to deem a steel as stainless (10-13%). It is important to note, that the amount of Chromium needed can be dependant upon the other elements used in the steel.

**TOOL STEELS** contain Tungsten, Molybdenum and other alloying elements that give them extra strength, hardness and resistance to wear.

**EXOTIC STEELS** are generally accepted as steel, but by definition are not steel. Examples of Exotic Steels include H1, ZDP-189, Talonite and Titanium.

There is an old proverb, "There was never a good knife made of bad steel." This statement, just like steel itself, is completely subjective as it relates to knives and knife knuts. We hope this information

provides you with a foundation to make your own determinations where steel is concerned.

## PROPERTIES OF STEEL

**ALLOY** A material that is dissolved in another metal in a solid solution; a material that results when two or more elements combine in a solid solution.

**AUSTENITIZED** The basic steel structure state in which an alloy is uniformly dissolved into iron.

**CRITICAL TEMPERATURE** The temperature at which steel changes its structure to austenite in preparation for hardening.

**CORROSION RESISTANCE** The ability of a material to resist deterioration as a result of a reaction to its environment. Provided by the elements Chromium (Cr), Copper (Cu), Molybdenum (Mo) and Nitrogen (N).

**DUCTILITY** The ability of a material to be stretched or drawn, plastically deform appreciably before fracturing. Provided by the element Manganese (Mn).

**EDGE RETENTION** The ability of a material to resist abrasion and wear. Provided by the elements Carbon (C), Chromium (Cr), Manganese (Mn), Nitrogen (N) and Vanadium (V).

**GRIT** The physical size of the austenite grains during austenizing. The actual size can vary due to thermal, time and forging considerations.

**HARDNESS** The resistance of a steel to deformation or penetration analogous to strength. Provided by the elements Carbon (C), Chromium (Cr), Cobalt (Co), Molybdenum (Mo), Nitrogen (N) and Phosphorus (P).

**HARDENABILITY** The ability of a steel to be hardened by a heat treating process. Provided by the elements Manganese (Mn), Molybdenum (Mo) and Tungsten (W).

**HEAT TREATING** A controlled heating and cooling process to prescribed temperatures and the limits for the purpose of changing the physical properties and behavior of the metal.

**IMPACT STRENGTH** The ability of a material to resist cracking due to a sudden force.

**MARTENSITE** A very hard and brittle steel with a distorted body centered tetragon crystal structure.

**PRECIPITATION** The separation of a substance that was previously dissolved in another substance.

**QUENCHING** Soaking of steel that has reached a high temperature above the recrystallization phase) in a medium of air, liquid, oil or water to rapidly cool it. Quenching steel creates martensite.

**ROCKWELL TEST** A measurement of steel hardness based on the depth of penetration of a small diamond cone pressed into the steel under a constant load.

**TEMPERING** Slow, steady heating of martensite steel to just below recrystallization temperature followed by a controlled consistent cooling phase for the purpose of slightly softening the steel, precipitating carbides, stress relieving.

**TENSILE STRENGTH** Indicated by the force at which a material breaks due to stretching. Provided by the elements Chromium (Cr) and Manganese (Mn).

**TOUGHNESS** The ability of a material to resist shock or impact. Provided by the elements Chromium (Cr).

**YIELD STRENGTH** The point at which steel becomes permanently deformed; the point at which the linear relationship of stress to strain changes on a Stress/Strain curve.

204D Diamond Triangle	52
204DVD Sharpmaker Instruction DVD	50
204F1 Fine Triangle	52
204M1 Medium Triangle	52
204UF1 Ultra-fine Triangle	52
204MF Tri-Angle Sharpmaker	50
302F Benchstone Fine	53
302M Benchstone Medium	53
302UF Benchstone Ultra-fine	53
303F Pocket Stone Fine	54
303M Pocket Stone Medium	54
303MF Doublestuff	54
306UF 3X8 Ultra-fine stone	53
400F Ceramic Files	55
701F Profile Fine	55
701M Profile Medium	55
701MF Profile Set	55
C07 Police Model	12
C08 Harpy	12
C10BK Endura Lightweight	4
C10FG Endura Foliage Green	6
C10FGF Endura G-10 Foliage Green	7
C10GRE Endura ZDP-189	9
C10GYW Endura Wave	5
C10KIT Endura Parts Kit	56
C10 Endura Stainless	8
C10TR Endura Trainer	10
C10TRW Endura Wave Trainer	11
C11BK Delica Lightweight	4
C11FG Delica Foliage Green	6
C11GFG Delica G-10 Foliage Green	7
C11GRE Delica ZDP-189	9
C11GYW Delica Wave	5
C11KIT Delica Parts Kit	56
C11 Delica Stainless	8
C11TR Delica Trainer	10
C11TRW Delica Wave Trainer	11
C12 Civilian	13
C12C Zippered Pouch	58
C14BK Rescue 93mm	14
C14GYW Rescue Wave	15
C28BK Dragonfly Lightweight	16
C28SS Dragonfly	16
C28PET Dragonfly	16
C29SS Cricket	17
C29PET Cricket	17
C30BK2 Remote Release2	17
C36 Military Model	18
C36BK Military Model	18
C41BK Native Lightweight	20
C41BK Native Lightweight Black	20
C45 Rescue 79mm	14
C63 Chinook	21
C66-3 Centofante3	22
C66-4 Centofante4	22
C75 Kiwi	23
C78 Native3	21
C79 Assist	13
C81 Para Military	19
C81BK Para Military	19
C86 Spin	23
C86PET Spin Etched	23
C88 Salt 1	34
C89 Pacific Salt	35
C90CF Stretch	24
C91 Pacific Salt	34
C94FG UK Penknife foliage green	24
C94OR UK Penknife orange	24
C98 Poliwoog	25
C103 P'Kal	26
C103TR P'Kal Trainer	26

C105 Persian	27
C106 Tasman Salt	36
C109BK "S" black	28
C109SL "S" silver	28
C110 Lava	28
C111 Captain	29
C113 Caly3	29
C114 Phoenix	30
C118 Saver Salt	35
C120 Mariner Salt	36
C122 Tenacious	30
CT01 Counter top display	58
CT02 Small knife stand	58
CT03 Large knife stand	58
FB01 Bill Moran	42
FB02 Bill Moran	42
FB15 Street Beat	43
FB16 Forester	44
FB17 Forager	44
FB18 Woodlander	44
FB19 Dayhiker	46
FB20 Rock Salt by Ed Schemp	39
FB21 Caspian Salt	37
FB22 Caspian2 Salt	37
FB23 Aqua Salt	38
HAT Military cap	57
KX06S Yin Kitchen knife	47
KX06P Yang Kitchen knife	47
LBK-3 Ladybug3	31
LSS-3 Ladybug3 stainless	31
SP1 SpyderPac Small	59
SP2 SpyderPac Large	59
T01 SpydeRench	48
TS Teeshirt	57

## BYRD INDEX

BY03BB Cara Cara Black blade	62
BY03BK Cara Cara Lightweight	63
BY03G Cara Cara G-10	63
BY03 Cara Cara Stainless	62
BY04BB Meadowlark Black Blade	64
BY04BK Meadowlark Lightweight	65
BY04G Meadowlark G-10	65
BY04 Meadowlark Stainless	64
BY05G Flight G-10	66
BY05 Flight Stainless	66
BY07G Crossbill G-10	67
BY07 Crossbill Stainless	67
BY08BK Raven Black	68
BY08G Raven G-10	68
BY08SL Raven Silver	68
BY09BK Crow Black	69
BY09G Crow G-10	69
BY09SL Crow Silver	69
BY10BK Robin Lightweight	70
BY10G Robin G-10	70
BY10 Robin Stainless	70
BY11BK Finch Lightweight	71
BY11 Finch Stainless	71
BY12 Starling	71
BY13 8-Tool Harp	73
BY14 Firebyrd	72
BY15 byrdRench	73
BY16 Flatbyrd	72
BY17 Cara Cara Rescue	74
BY18 Catbyrd	75
BY19 Meadowlark Rescue	74
BY20 Wings	75
BY200 Duckfoot	76
HAT	77
TS	77

The following marks are recognized trademarks of Spyderco, Inc.: Advntr, Adventura, Aqua Salt, Assist, Atlantic Salt, A.T.R., Ball Bearing Lock, Bi-Directional Texturing, Bi-Fold, Black Hawk, byrd knife, byrdRench, Caly3, Calypso, Calypso Jr., Captain, Cara Cara, Cara Cara Rescue, Caspian Salt, Catbyrd, Catcherman, Chinook, Civilian, Galyppo, Galyppo Jr., Captain, Cara Cara, Cara Cara Rescue, Caspian Salt, Catbyrd, Catcherman, Chinook, Civilian, Hood, ComboEdge, CombinationEdge, Compression Lock, CoPilot, Cricket, Critter Line, Crossbill, Crow, Dayhiker, Delica, Delica II, Delica III, Delica4, DK Penknife, Dodo, Double Stuff, Dragonfly, Duckfoot, Dyad, Dyad Jr., Edge-U-Cation, Endura, Endura II, Endura III, Endura4, Evolution Edition, Executive, Finch, Firebyrd, Flatbyrd, Flight, Forager, Forester, Galley "V", Gunting, Harp, Harp Tool, Harpy, Hummingbird, Hunter, Impala, Jester, Kinetic Opening, Kiwi, Kopa, Kris Folder, Kumo, LadyBug, LadyBug II, Lava, Little Big Knives, Lil' Temperance, LBK, Manix, Mariner, Mariner Salt, Matriarch, Meadowlark, Meadowlark Rescue, MeerKat, Merlin, Micro Dyad, Military Model, Mini Dyad, Mini Mariner, Mini Probe, Native, Native II, Native III, Navigator, Ocelot, P'Kal, Para-Military, Pacific Salt, Pegasus, Pelican, Persian Folder, Phantom Lock, Pikal, PlainEdge, Police Model, Pre-Diver, Pride, Poliwoog, Probe, Pro Culinaire, ProFile, Pro-Grip, Pro-Venator, "Q", "R", Raven, Remote Release, Renegade, Rescue, Rescue Jr., Robin, Ronin, Rookie, "S", Salsa, Salt Series, Salt I, Saver Salt, Scorpion, SecureLock, SecurLok, Shabaria, Sharpmaker, SmallFly, Snap-It, Spin, Sprint Run, S.P.O.T., Solo, Speed Sleeves, SpringClip, SpringLock, Sprint Run, Spur, SpyderCard, Spyderco Trademark Round Hole, SpyderEdge, SpyderFly, SpyderHawk, Spyderkey, SpyderPac, SpydeRench, SpyderSaw, SpyKer, Standard, Starling, Starmate, Street Beat, Stretch, Swick, SzaboFly, T-Mag, Tasman Salt, Temperance, Tenacious, Trakk'r, Tri-Angle Sharpmaker, UK Penknife, Vagabond, Vesuvius, Volcano Grip, Volpe, Wings, Woodlander, Worker, Yin Kitchen Knife, Yang Kitchen Knife, Yojimbo. The following slogans are recognized trademarks of Spyderco, Inc.: "First We Made Things Sharp... Then We Made Sharp Things", "High Performance Matter Separators", "Integrity is Being Good Even if No One is Watching", "Quality is the Product of a Good Attitude", and "Those Who Know

Carry Spyderco "Crafted For Life". The following marks, designs and slogans are registered trademarks of Spyderco, Inc.: G. Sakai, Native, Spyderco, Spyder Bug Design, Round Hole Design, and "All God's Critters Have Knives". Spyderco, Inc. products are covered by one or more of the following patents: 1,957,810, 728008, TMA502,771, 2,033,317, 669,496, TMA468,742, 262519, 2,032,472, 742,786, 2,169,685, 1,965,458, 669,495, TMA479,238, 472191, 2,032,465, 742,785, 2,003,071, 1,957,810, 2,239,296, 2,334,210, 2,171,620, 2,171,899, 2,250,477, 2,494,673, 2,491,361, 2,550,975, 2,230,394, 2,464,061, 64569, 64645, 92628, 102268, 171837, 999820, 2,661,729, DE49910779.9, 4,347,665, 4,640,058, 4,776,094, 4,776,094, 5,379,492, 5,615,484, 5,628,117, 5,689,890, 5,704,129, 5,704,129, 5,884,467, 5,920,935, 5,928,069, 5,964,036, 5,983,506, 6,205,667, 6,725,545, 6,751,868, D418,383, 6,918,184, D444,093 D333,081, D333,251, D337,253, D344,006, D349,837, D349,837, D353,988, D379,294 D381,060, D382,189, D382,459, D386,664, D387,966, D388,150, D389,389, D389,718, D391,465, D401,129, D402,177, D402,178, D402,524, D403,567, D404,990, D406,038 D411,431, D411,790, D419,336, D421,378, D422,052, D422,461, D422,871, D422,875 D425,391, D427,500, D429,138, D434,631, D435,420, D436,014, D438,443, D441,827 D442,460, D461,387, D464,551, D468,985, D487,494. Other U.S. and foreign patents pending. Ball Chain, Cordura, CPM, Crucible, Empire/Boltaron, H-1, Kevlar, KRATON, Kydex, Linerlock, Micarta, Para Cord, Tek-Lok, 440V and S30V are registered trademarks of their respective holders. Michael Walker is the inventor of the ball bearing detent that is used to keep the blade in a Linerlock closed. H. McBurnette and Al Mar are credited with the positive front lock design. Wave feature licensed under Emerson Pat. #5,878,500. Copyright © 2006-2007. All rights reserved. All product names, art and text herein are the property of Spyderco, Inc. and may not be reproduced in part or whole without the sole written permission of Spyderco, Inc.

Catalog printed in the U.S.A.

STEEL	CARBON	CHROMIUM	COBALT	COPPER	MANGANESE	MOLYBDENUM	NICKEL	NITROGEN	PHOSPHORUS	SILICON	SULFUR	TUNGSTEN	VANADIUM
1095	0.90-1.03	--	--	--	0.30-0.50	--	--	--	0.04	--	0.05	--	--
5160	0.56-0.64	0.70-0.90	--	--	0.75-1.00	--	--	0.04	0.15-0.30	--	--	--	--
52100	0.98-1.10	1.30-1.60	--	--	0.25-0.45	--	--	0.03	0.15-0.30	0.03	--	--	--
154CM	1.05	14.00	--	--	--	4.00	--	--	--	--	--	--	--
20CV	1.90	20.00	--	--	0.30	1.00	--	--	0.30	--	--	0.60	4.00
420 Modified	.38	13.60	--	--	.50	--	--	--	.75	1.00	.003	--	0.30
420J2	0.15	12.00-14.00	--	--	1.00	--	--	--	0.04	1.00	0.03	--	--
425 Modified	0.40-0.54	13.50-15.00	--	--	0.50	0.60-1.00	--	--	0.04	0.80	0.03	--	0.10
440A	0.65-0.75	16.00-18.00	--	--	1.00	0.75	--	--	0.04	1.00	0.03	--	--
440B	0.75-0.95	16.00-18.00	--	--	1.00	0.75	--	--	0.04	1.00	0.03	--	--
440C	0.95-1.20	16.00-18.00	--	--	1.00	0.75	--	--	0.04	1.00	0.03	--	--
440XH	1.60	16.00	--	--	0.50	0.80	0.35	--	0.40	--	--	--	0.45
8Cr-13MoV	0.80	13.00	--	--	0.40	0.15	0.20	--	0.02	0.50	0.01	--	0.10
9Cr-13Mo	0.95	16.00	--	--	0.30	0.50	0.10	--	0.02	0.50	0.01	--	0.20
A-2	1.00	5.25	--	--	0.85	1.10	--	--	--	--	--	--	0.25
ATS-84	1.05	14.00	--	--	0.40	4.00	--	--	0.03	0.35	0.02	--	--
ATS-55	1.00	14.00	0.40	0.20	0.50	0.50	--	--	0.40	--	--	--	--
AUS-10	0.95-1.10	13.00-14.50	--	--	0.50	0.10-0.31	0.49	--	0.04	1.00	0.03	--	0.10-0.27
AUS-6	0.55-0.65	13.00-14.50	--	--	1.00	--	0.49	--	0.04	1.00	0.03	--	0.10-0.25
AUS-8	0.70-0.75	13.00-14.50	--	--	0.50	0.10-0.30	0.49	--	0.04	1.00	0.03	--	0.10-0.26
BG-42	1.15	14.50	--	--	0.50	4.00	--	--	0.30	--	--	--	1.20
CPM-10V	2.45	5.25	--	--	--	1.30	--	--	--	--	--	--	9.75
CPM-125V	3.20-3.40	13.75-14.25	0.50	0.250	40-60	2.25-2.75	0.40	0.8-50	0.03	40-60	0.03	0.50	11.5-12.25
CPM-15V	3.40	5.25	--	--	--	1.30	--	--	--	--	--	--	14.50
CPM-3V	0.80	7.50	--	--	--	1.30	--	--	--	--	--	--	2.75
CPM-9V	1.78	5.25	--	--	--	1.30	--	--	--	--	--	--	9.00
CPM-M4	1.40	4.00	--	--	0.30	5.25	4.00	--	--	0.55	0.06	5.50	4.00
CPM-S30V	1.45	17.00	--	--	--	2.00	--	--	--	--	--	--	4.00
CPM-S60V (440V)	2.15	17.00	--	--	0.40	4.00	--	--	0.40	--	--	--	5.50
CPM-S90V (420V)	2.30	14.00	--	--	--	1.00	--	--	--	--	--	--	9.00
D-2	1.55	11.50	--	--	--	0.90	--	--	--	--	--	--	0.80
GIN-1	0.90	15.50	--	--	0.60	0.30	--	0.02	0.37	0.37	0.03	--	--
H-1	0.15	14.00-16.00	--	1.1	2.0	0.50-1.50	6.00-8.00	0.10	0.04	3.00-4.50	0.03	--	--
Hitachi Blue Super Steel	1.40-1.50	0.30-0.50	--	--	0.20-0.30	0.30-0.50	--	--	0.03	0.10-0.20	0.00	2.00-2.50	0.50
M-2	1.00	4.15	--	--	--	5.00	--	--	--	--	--	6.40	1.95
MBS-26	0.85-1.00	13.00-15.00	--	--	0.30-0.60	0.15-0.25	--	0.04	0.65	0.65	0.01	--	--
MRS-30	1.12	14.00	--	--	0.50	0.60	--	--	1.00	--	--	--	0.25
N690Co	1.07	17.00	1.50	--	0.40	1.10	--	--	0.40	--	--	--	0.10
O-1	0.85-1.00	0.40-0.60	--	--	1.00-1.40	--	0.30	--	0.50	--	--	--	0.30
Sandvik 12C27	0.60	13.50	--	--	0.40	--	--	--	0.03	0.40	0.01	--	--
Sandvik 12C27 Mod.	14.50	14.50	--	--	0.60	--	--	--	0.25	0.40	0.01	--	--
Vascowear	1.12	7.75	--	--	0.30	1.60	--	--	1.20	--	--	1.10	2.40
VG-10	0.95-1.05	14.50-15.50	1.30-1.50	--	0.50	0.90-1.20	--	0.03	0.60	--	--	--	0.10-0.30
W-1	0.70-1.50	0.15	--	--	0.10-0.40	0.10	0.20	--	0.10-0.40	--	--	0.50	0.10
W-2	0.85-1.50	0.15	--	--	0.10-0.40	0.10	0.20	--	0.10-0.40	--	--	0.15	0.15-0.35
X-15TN	0.42	15.55	--	--	0.46	1.70	0.30	0.21	0.02	0.23	0.00	--	0.29
ZDP-189	3.00	20.00	--	--	--	--	--	--	--	--	--	--	--

**NEW!****SPYDERCO 2008**

PAGE

306UF	3" X 8" ULTRA FINE STONE	53
C10GFG	ENDURA G-10 FOLIAGE GREEN	7
C11GFG	DELICA G-10 FOLIAGE GREEN	7
C10KIT	ENDURA REPAIR KIT	56
C11KIT	DELICA REPAIR KIT	56
C10TRW	ENDURA TRAINER WAVE	11
C11TRW	DELICA TRAINER WAVE	11
C14GYW	RESCUE WAVE	15
C75CF	KIWI CARBON FIBER	23
C79SOR	ASSIST ORANGE	13
C90CF	STRETCH CARBON FIBER	24
C94FG	UK PENKNIFE FOILAGE GREEN	24
C94OR	UK PE NKNIFE ORANGE	24
C103TR	P'KAL TRAINER	26
C113CF	CALY3 CARBON FIBER	29
C114	PHOENIX BY HOWARD VIELE	30
C122	TENACIOUS	30
C120	MARINER SALT	36
T01	SPYDERENCH	48
C118	SAVER SALT	35
FB20	ROCK SALT BY ED SCHEMP	39
FB21	CASPIAN SALT	37
FB22	CASPIAN2 SALT	37
FB23	AQUA SALT	38
TSGY	SPYDERCO TEE SHIRT	57
HATGY	SPYDERCO HAT	57

**NEW!****BYRD KNIVES**

BY05G	FLIGHT G-10	66
BY07G	CROSSBILL G-10	67
BY08G	RAVEN G-10	68
BY09	CROW G-10	69
BY10BK	ROBIN LIGHTWEIGHT	70
BY15	BYRDRENCH	73
BY16	FLATBYRD	72
BY17	CARA CARA RESCUE LIGHTWEIGHT	74
BY19	MEADOWLARK RESCUE LIGHTWEIGHT	74
BY18	CATBYRD SS	75
BY20G	WINGS	75
BY200	DUCKFOOT	76
TSBL	BYRD TEE SHIRT	77
HATBL	BYRD HAT	77





---

820 SPYDERCO WAY  
GOLDEN, CO 80403  
U.S.A.

TOLL FREE: 800-525-7770

LOCAL: 303-279-8383

FAX: 303-278-2229

[WWW.SPYDERCO.COM](http://WWW.SPYDERCO.COM)

[WWW.BYRDKNIFE.COM](http://WWW.BYRDKNIFE.COM)

---



---